

CHARTERED ACCEL INDUSTRIES



Instrumentation

- TUBE FITTING
- PIPE FITTING
- NEEDLE VALVE
- MANIFOLD VALVE

The profession for best quality and best results.

One stand instrumentation solution / control & leak solution

About the company

CHARTERED ACEEL INDUSTRIES A fast growing manufacturing company having over 2 decades of experience and expertise in manufacturing and marketing high quality Fittings and Valves suitable for Instrumentation, Hydraulic and Pneumatic applications, used in industries like Automobile, Chemical, Petrochemical, oil & Gas, nuclear, Power Plant, Pharmaceutical, Marine, Packaging, Printing Industries etc

Manufacture

We manufacture each and every component of our products in our own manufacturing facilities using various CNC Lathes, VMC Lathes, and Auto screw machines etc. to very close tolerances by closely monitoring critical dimensions, surface finishes, run out, sharp edges etc. after referring and meeting the requirements as per drawing, under rigid quality controlled procedures approved to ISO 9001 : 2015, which ensures consistent quality and high performance products.

Quality

Chartered Accel Industries has total quality management culture from the incoming high quality traceable raw material to finish products ensuring our commitment to efficient and high-quality products compatible with ISO 9001: 2015. This is achieved by continuous improving the products, process and systems. At every stage, we have controlled quality checks so that all our supplies reach to our customers with zero defect

Packing

All exposed threads of the products are protected with plastic caps to prevent damage, each assembly is packed in sealed and clear polyethylene bag for cleanliness and carefully packed in cardboard boxes to prevent transit damage. Each and every package is labeled for proper and easy identification



Pipe End Thread Information

The end connections with the lower pressure rating is the determining factor of pressure rating for the fittings with both Uni-Lok tube ends and pipe thread ends .

Pressure Rating for Pipe End Thread

Tapered Pipe Threads - NPT or ISO 7/1(BSPT)

Allowable pressure ratings for male and female threads are based on ASME B31.3 at ambient temperature.

Pipe Size	316SS				Brass		
	Male		Female		Male	Female	
inch	bar	psig	bar	psig	psig	bar	psig
1/16	760	11000	460	6700	5500	230	3300
1/8	690	10000	440	6500	5000	220	3200
1/4	550	8000	450	6600	4000	220	3300
3/8	540	7800	360	5300	3900	180	2600
1/2	530	7700	330	4900	3800	160	2400
3/4	500	7300	320	4600	3600	160	2300
1	370	5300	300	4400	2600	150	2200
1-1/4	410	6000	350	5000	3000	170	2500
1-1/2	340	5000	310	4600	2500	150	2300
2	270	3900	270	3900	1900	130	1900

Designator for NPT pipe thread is N, ISO/7 is R.

ISO 228/1 Parallel Thread (BSPP)

The pressure ratings are at ambient temperature.

Male Pipe Size	316SS	
	bar	psig
1/8	316	4568
1/4	315	4568
3/8	315	4568
1/2	160	2320

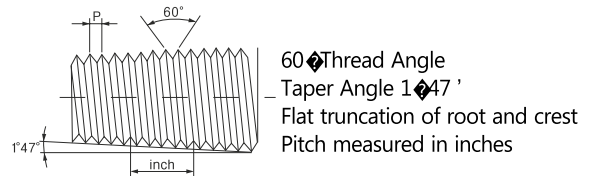
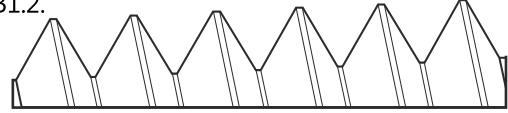
O-Seal Fittings

Rated to 206 bar (3000 psig) for 316SS fittings up to 1 inch and 25mm

Kinds of Pipe End Thread

NPT Pipe Thread

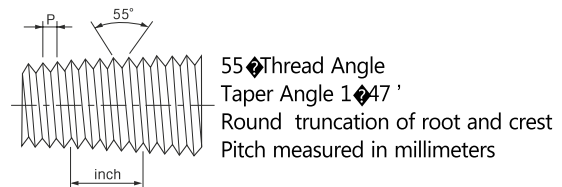
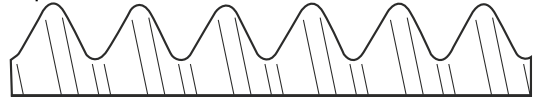
NPT (National Pipe Thread) is based on ANSI B1.2.



ISO 7/1 Tapered Pipe Thread

International Organization for Standard (ISO 7/1) Tapered (PT)

Equivalent to BSPT (British Standard Pipe Taper Thread), DIN 2999, JIS B0203

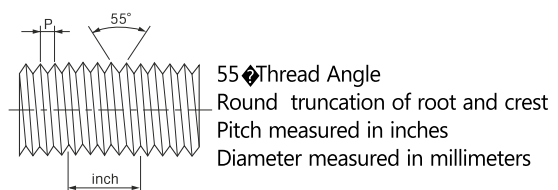
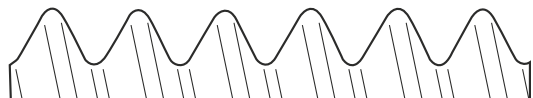


ISO 228/1 Parallel Pipe Thread

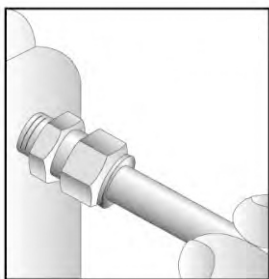
International Organization for Standard (ISO 228/1) Parallel (PF)

Equivalent to BSPP (British Standard Pipe Parallel Thread), DIN ISO228/1, JIS B0202

Gasket or O-ring is normally used to seal into the parallel female threaded components.



Tube Fitting Installation Instruction



1. Firmly insert the tubing until it bottoms in the fitting body.
2. Finger tighten the nut.
3. Mark the nut at the 6 o'clock position, with pencil or scribe.

4. Hold the body with a backup wrench, or vice, then tighten nut.

5. 1-1/4 turns to the 9 o'clock position.

Reassembly - Simply insert tube assembly into fitting body, tighten nut to the original position as indicated by the previous mark, then snug up slightly with a wrench.

Materials

Tube Fitting are available in various kinds of materials as below. Straight fittings are machined from cold finished bar stock and shaped fittings from forgings. For more details or special application, contact your local distributors.

Materials	Bar Stock	Forgings
316 SS or 316L SS	ASTM A479 ASME SA479	ASTM A182 ASME SA182
Brass ^①	ASTM B16 ASTM B453	ASTM B283
Alloy 400 (Monel [®])	ASTM B164	
Alloy 600 (Inconel [®])	ASTM B166	ASTM B564
Alloy 625 (Inconel [®])	ASTM B166	ASME SB564
Alloy 825 (Incoloy [®])	ASTM B425	
Alloy C-276 (Hastelloy C [®])	ASTM B574	ASTM B564
PTFE	ASTM D1710	ASTM D3294
Alloy 2205 / UNS 32205(Duplex)	ASTM A479	ASTM A182
Alloy 2207 / UNS 32750(Super Duplex)	ASTM A479	
UNS 31254 (Incoloy 25-6MO [®])	ASTM B649	-

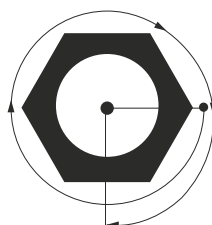
①Nickel plating is available as optional.

*Monel, Inconel, Incoloy, Incoloy 25-6MO are the trade marks of Special Metals.

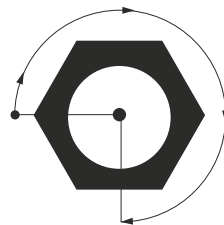
*Hastelloy C is the trade mark of Haynes International.

6. The above applies to all fittings from 1/4 to 1" (6mm to 25mm).

1/4" ~ 1" O.D.
6mm ~ 25mm O.D.



1/16" ~ 3/16" O.D.
2mm ~ 4mm O.D.



7. Fittings from 1/8" to 3/16" (3mm to 4mm), only 3/4 turn is required.

Sour Environment Services

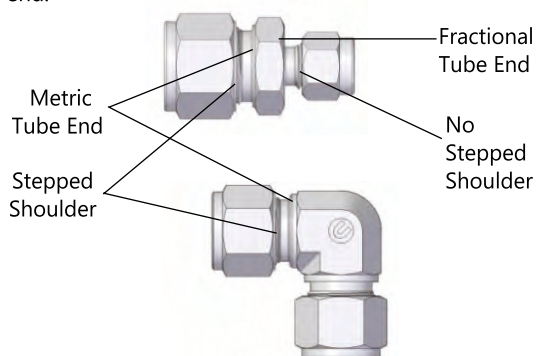
Tube Fittings are comply with NACE MR-0175/ISO

115156 for sour oilfield application or NACE MR-0103 for petroleum refining operations.

To order, add - N to the end of part number.

Identification of Metric Tube Fittings

Every tube Fitting with metric tube end have a stepped shoulder to distinguish the fittings with fractional tube end.



Cleaning

Tube Fittings are free from machine oils, loose particles and grease throughout the close cleaning process. tube fittings for oxygen enriched systems are available by the special cleaning procedure. To order, add - SC to the part number.



Tubing Information

The proper selection of tubing is essential to assure maximum fitting reliability and performance. When choosing tubing material, size and wall thickness, consider system's pressure, flow rate, temperature, environment and compatibility with great care.

Maximum Allowable Working Pressure

Stainless Steel Tubing

Fully annealed and seamless stainless steel tubing to comply with ASTM A269 or equivalent.

Hardness should not exceed Rb 80.

Tubing should be free from scratched and suitable for bending and flaring.

Fractional(Inch) Tubing											
Tube O.D. (inch)	Tube Wall Thickness (inch)										
	0.028	0.035	0.049	0.065	0.083	0.095	0.109	0.120	0.134	0.156	0.188
1/8	8550	10950									
3/16	5500	7100	10300								
1/4	4100	5200	7600	10300					Working pressure in psig		
5/16		4100	5900	8100							
3/8		3350	4850	6550							
1/2		2650	3750	5150	6750						
5/8			2950	4050	5250	6050					
3/4			2450	3350	4250	4950	5850				
7/8			2050	2850	3650	4250	4850				
1				2400	3100	3600	4200	4700			
1-1/4					2400	2800	3300	3600	4100	4900	
1-1/2						2300	2700	3000	3400	4000	4900
2							2000	2200	2500	2900	3600

Metric Tubing											
Tube O.D. (mm)	Tube Wall Thickness (mm)										
	0.8	1.0	1.2	1.5	2.0	2.2	2.5	3.0	3.5	4.0	4.5
3	9700										
4	7900	11500									
6	4500	6100	7850	10300					Working pressure in psig		
8		4500	5650	7550							
10		3500	4350	5800	8400						
12		2900	3600	4800	6800						
14		2300	2900	4000	5500	6250					
15		2200	2750	3650	5200	5800					
16			2450	3350	4800	5350	5800				
18			2150	2950	4200	4650	5350				
20			2030	2600	3750	4200	4800				
22			1750	2300	3350	3750	4350				
25					2900	3350	3750	4650			
38						2030	2300	2900	3500	3900	4500

For gas service application, use only tubing with wall thickness on outside of gray areas.

Allowable stress of 20000 psig between -30°C(-22°F) and 40°C(104°F) based on ultimate tensile strength to be 74000 psig.



TUBE FITTING

6,7



Male Connector

8



Male Pipe Weld Connector

9,10



Male Elbow

11



Male Adapter

12



Bulkhead Male Connector

12



Bulkhead Female Connector

13



Male Run Tee

14



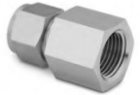
Male Branch Tee

12



Female Adapter

16,17



Female Connector

18



Female Elbow

19



Female Run Tee

20



Female Branch Tee

21



Union

22



Bulkhead Union

23



Reducing Union

24



Union Tee

25



Union Cross

26



Union Elbow

27



Bulk Head Reducer

NUT

28,29



Reducer

30



Tube Cap

31



Tube Plug

32



Front Ferrule

Back Ferrule

All dimensions are reference only, and are subject to change without prior notice. Sizes and types other than those featured above are available on request.

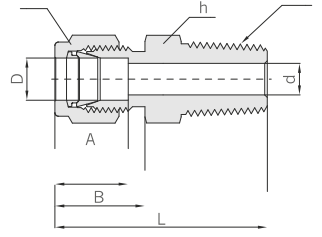


The profession for best quality and best re

TUBE FITTING



Male Connector CAMA



Connects Fractional Tube To Female NPT Thread

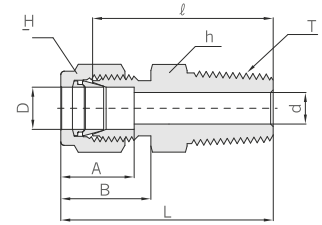
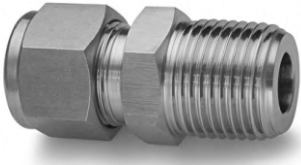
Part No.	Tube O.D. D		T* (NPT)	d Min.	Width across flat				A	B	ℓ	L
	in	mm			h		H					
					in	mm	in	mm				
1 - SEMC1N	1/16	1.58	1/16	1.27	5/16	7.93	5/16	7.93	8.63	10.92	20.00	23.83
1 - SEMC2N	1/16	1.58	1/8	1.27	7/16	11.11	7/16	11.11	8.63	10.92	22.35	26.23
1 - SEMC4N	1/16	1.58	1/4	1.27	9/16	14.28	5/16	7.93	8.63	10.92	27.17	30.98
2 - SEMC1N	1/8	3.17	1/16	2.28	7/16	11.11	7/16	11.11	12.70	15.24	23.11	29.71
2 - SEMC2N	1/8	3.17	1/8	2.28	7/16	11.11	7/16	11.11	12.70	15.24	23.87	30.48
2 - SEMC4N	1/8	3.17	1/4	2.28	9/16	14.28	7/16	11.11	12.70	15.24	28.95	35.56
2 - SEMC6N	1/8	3.17	3/8	2.28	11/16	17.46	7/16	11.11	12.70	15.24	29.21	35.81
2 - SEMC8N	1/8	3.17	1/2	2.28	7/8	22.22	7/16	11.11	12.70	15.24	35.56	42.16
3 - SEMC2N	3/16	4.76	1/8	3.04	7/16	11.11	1/2	12.70	13.71	16.00	24.63	31.24
3 - SEMC4N	3/16	4.76	1/4	3.04	9/16	14.28	1/2	12.70	13.71	16.00	29.71	36.32
4 - SEMC1N	1/4	6.35	1/16	4.82	1/2	12.70	9/16	14.28	15.24	17.78	25.40	32.76
4 - SEMC2N	1/4	6.35	1/8	4.82	1/2	12.70	9/16	14.28	15.24	17.78	25.40	32.76
4 - SEMC4N	1/4	6.35	1/4	4.82	9/16	14.28	9/16	14.28	15.24	17.78	30.48	37.84
4 - SEMC6N	1/4	6.35	3/8	4.82	11/16	17.46	9/16	14.28	15.24	17.78	30.98	38.35
4 - SEMC8N	1/4	6.35	1/2	4.82	7/8	22.22	9/16	14.28	15.24	17.78	37.33	44.70
4 - SEMC12N	1/4	6.35	3/4	4.82	1-1/16	26.98	9/16	14.28	15.24	17.78	38.86	46.22
5 - SEMC2N	5/16	7.93	1/8	4.82	9/16	14.28	5/8	15.87	16.25	18.54	26.67	34.03
5 - SEMC4N	5/16	7.93	1/4	6.35	9/16	14.28	5/8	15.87	16.25	18.54	31.24	38.60
5 - SEMC6N	5/16	7.93	3/8	6.35	11/16	17.46	5/8	15.87	16.25	18.54	31.75	39.11
6 - SEMC2N	3/8	9.52	1/8	4.82	5/8	15.87	11/16	17.46	16.76	19.30	27.94	35.30
6 - SEMC4N	3/8	9.52	1/4	7.11	5/8	15.87	11/16	17.46	16.76	19.30	32.51	39.87
6 - SEMC6N	3/8	9.52	3/8	7.11	11/16	17.46	11/16	17.46	16.76	19.30	32.51	39.87
6 - SEMC8N	3/8	9.52	1/2	7.11	7/8	22.22	11/16	17.46	16.76	19.30	38.86	46.22
6 - SEMC12N	3/8	9.52	3/4	7.11	1-1/16	26.98	11/16	17.46	16.76	19.30	40.38	47.75
8 - SEMC2N	1/2	12.70	1/8	4.82	13/16	20.63	7/8	22.22	22.86	21.84	28.70	38.86
8 - SEMC4N	1/2	12.70	1/4	7.11	13/16	20.63	7/8	22.22	22.86	21.84	33.27	43.43
8 - SEMC6N	1/2	12.70	3/8	9.65	13/16	20.63	7/8	22.22	22.86	21.84	33.27	43.43
8 - SEMC8N	1/2	12.70	1/2	10.41	7/8	22.22	7/8	22.22	22.86	21.84	38.86	49.02
8 - SEMC12N	1/2	12.70	3/4	10.41	1-1/16	26.98	7/8	22.22	22.86	21.84	40.38	50.54
8 - SEMC16N	1/2	12.70	1	10.41	1-3/8	34.92	7/8	22.22	22.86	21.84	46.99	57.15
10 - SEMC6N	5/8	15.87	3/8	9.65	15/16	23.81	1	25.40	24.38	21.84	34.03	44.19
10 - SEMC8N	5/8	15.87	1/2	11.93	15/16	23.81	1	25.40	24.38	21.84	38.86	49.02
10 - SEMC12N	5/8	15.87	3/4	12.70	1-1/16	26.98	1	25.40	24.38	21.84	40.38	50.54
12 - SEMC8N	3/4	19.05	1/2	11.93	1-1/16	26.98	1-1/8	28.57	24.38	21.84	40.38	50.54
12 - SEMC12N	3/4	19.05	3/4	15.74	1-1/16	26.98	1-1/8	28.57	24.38	21.84	40.38	50.54
12 - SEMC16N	3/4	19.05	1	15.74	1-3/8	34.92	1-1/8	28.57	24.38	21.84	46.99	57.15
14 - SEMC12N	7/8	22.22	3/4	15.74	1-3/16	30.16	1-1/4	31.75	25.90	21.84	40.38	50.54
14 - SEMC16N	7/8	22.22	1	18.28	1-3/8	34.92	1-1/4	31.75	25.90	21.84	46.99	57.15
16 - SEMC 8N	1	25.40	1/2	11.93	1-3/8	34.92	1-1/2	38.10	31.24	26.41	45.21	57.40
16 - SEMC12N	1	25.40	3/4	15.74	1-3/8	34.92	1-1/2	38.10	31.24	26.41	45.21	57.40
16 - SEMC16N	1	25.40	1	22.35	1-3/8	34.92	1-1/2	38.10	31.24	26.41	50.03	62.23

All dimensions are reference only, and are subject to change without prior notice. Sizes and types other than those featured above are available on request.



The profession for best quality and best re

Male Connector CAMC



Connects Metric Tube To Female ISO Tapered Thread

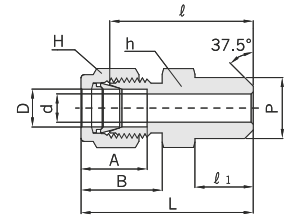
Part No.	Tube O.D. D	T* R(PT)	d Min	Width across flat		A	B	ℓ	L
				h	H				
SEMC 2M - 2R	2	1/8	1.7	12	12	12.9	15.3	23.9	30.5
SEMC 3M - 2R	3	1/8	2.4	12	12	12.9	15.3	23.9	30.5
SEMC 3M - 4R	3	1/4	2.4	14	12	12.9	15.3	29.0	35.6
SEMC 4M - 2R	4	1/8	2.4	12	12	13.7	16.1	24.6	31.2
SEMC 4M - 4R	4	1/4	2.4	14	12	13.7	16.1	29.7	36.3
SEMC 6M - 2R	6	1/8	4.8	14	14	15.3	17.7	25.4	32.8
SEMC 6M - 4R	6	1/4	4.8	14	14	15.3	17.7	30.5	37.9
SEMC 6M - 6R	6	3/8	4.8	18	14	15.3	17.7	31.0	38.4
SEMC 6M - 8R	6	1/2	4.8	22	14	15.3	17.7	37.3	44.7
SEMC 8M - 2R	8	1/8	4.8	15	16	16.2	18.6	26.7	34.2
SEMC 8M - 4R	8	1/4	6.4	15	16	16.2	18.6	31.2	38.7
SEMC 8M - 6R	8	3/8	6.4	18	16	16.2	18.6	31.8	39.2
SEMC 8M - 8R	8	1/2	6.4	22	16	16.2	18.6	38.1	45.6
SEMC 10M - 2R	10	1/8	4.8	18	19	17.2	19.5	28.7	36.3
SEMC 10M - 4R	10	1/4	7.1	18	19	17.2	19.5	33.3	40.9
SEMC 10M - 6R	10	3/8	7.9	18	19	17.2	19.5	33.3	40.9
SEMC 10M - 8R	10	1/2	7.9	22	19	17.2	19.5	38.9	46.5
SEMC 12M - 4R	12	1/4	7.1	22	22	22.8	22.0	33.3	43.4
SEMC 12M - 6R	12	3/8	9.5	22	22	22.8	22.0	33.3	43.4
SEMC 12M - 8R	12	1/2	9.5	22	22	22.8	22.0	38.9	49.0
SEMC 12M - 12R	12	3/4	9.5	27	22	22.8	22.0	40.4	50.5
SEMC 15M - 8R	15	1/2	11.9	24	25	24.4	22.0	38.9	49.0
SEMC 16M - 4R	16	1/4	7.1	24	25	24.4	22.0	34.0	44.1
SEMC 16M - 6R	16	3/8	9.5	24	25	24.4	22.0	34.0	44.1
SEMC 16M - 8R	16	1/2	11.9	24	25	24.4	22.0	38.9	49.0
SEMC 16M - 12R	16	3/4	12.7	27	25	24.4	22.0	38.9	49.0
SEMC 18M - 8R	18	1/2	11.9	27	30	24.4	22.0	40.4	50.5
SEMC 18M - 12R	18	3/4	15.1	27	30	24.4	22.0	40.4	50.5
SEMC 20M - 8R	20	1/2	11.9	30	32	26.0	22.0	42.2	52.3
SEMC 20M - 12R	20	3/4	15.9	30	32	26.0	22.0	42.2	52.3
SEMC 22M - 12R	22	3/4	15.9	30	32	26.0	22.0	42.2	52.3
SEMC 22M - 16R	22	1	18.3	35	32	26.0	22.0	47.0	57.0
SEMC 25M - 12R	25	3/4	15.9	35	38	31.3	26.5	45.2	57.5
SEMC 25M - 16R	25	1	21.8	35	38	31.3	26.5	50.0	62.3

All dimensions are reference only, and are subject to change without prior notice. Sizes and types other than those featured above are available on request.



The profession for best quality and best re

Male Pipe Weld Connector CAPWC



Connects Fractional Tube To Pipe

Part No.	Tube O.D. D		Male Pipe Size P		d Min.	Width across flat				A	B	ℓ	ℓ ₁	L
	in	mm	Nom.	O.D.		h		H						
						in	mm	in	mm					
SEPWC 2 - 2P	1/8	3.17	1/8	10.30	2.28	7/16	11.11	7/16	11.11	12.70	15.24	23.87	9.65	31.24
SEPWC 3 - 2P	3/16	4.76	1/8	10.30	3.04	7/16	11.11	1/2	12.70	13.71	16.00	24.63	9.65	31.24
SEPWC 4 - 2P	1/4	6.35	1/8	10.30	4.82	1/2	12.70	9/16	14.28	15.24	17.78	25.40	9.65	32.76
SEPWC 4 - 4P	1/4	6.35	1/4	13.70	4.82	9/16	14.28	9/16	14.28	15.24	17.78	30.48	14.22	37.84
SEPWC 5 - 2P	5/16	7.93	1/8	10.30	5.08	9/16	14.28	5/8	15.87	16.25	18.54	26.67	9.65	34.03
SEPWC 5 - 4P	5/16	7.93	1/4	13.70	6.35	9/16	14.28	5/8	15.87	16.25	18.54	31.24	14.22	38.60
SEPWC 6 - 4P	3/8	9.52	1/4	13.70	7.11	5/8	15.87	11/16	17.46	16.76	19.30	32.51	14.22	39.87
SEPWC 6 - 6P	3/8	9.52	3/8	17.10	7.11	11/16	17.46	11/16	17.46	16.76	19.30	32.51	14.22	39.87
SEPWC 6 - 8P	3/8	9.52	1/2	21.30	7.11	7/8	22.22	11/16	17.46	16.76	19.30	38.86	19.05	43.23
SEPWC 6 - 12P	3/8	9.52	3/4	26.67	7.11	1-1/16	26.98	11/16	17.46	16.76	19.30	40.38	19.05	47.75
SEPWC 8 - 6P	1/2	12.70	3/8	17.10	10.41	13/16	20.63	7/8	22.22	22.86	21.84	33.27	14.22	43.43
SEPWC 8 - 8P	1/2	12.70	1/2	21.30	10.41	7/8	22.22	7/8	22.22	22.86	21.84	38.86	19.05	49.02
SEPWC 8 - 12P	1/2	12.70	3/4	26.67	10.41	1-1/16	26.98	7/8	22.22	22.86	21.84	40.38	19.05	50.54
SEPWC10 - 8P	5/8	15.87	1/2	21.30	12.70	15/16	23.81	1	25.40	24.38	21.84	38.86	19.05	49.02
SEPWC12 - 12P	3/4	19.05	3/4	26.67	15.74	1-1/16	26.98	1-1/8	28.57	24.38	21.84	40.38	19.05	50.54
SEPWC16 - 16P	1	25.40	1	33.40	22.35	1-3/8	34.92	1-1/2	38.10	31.24	26.41	50.03	23.87	62.23

Connects Metric Tube To Pipe

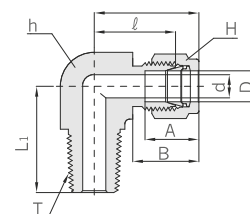
Part No.	Tube O.D. D	Male Pipe Size P		d Min.	Width across flat		A	B	ℓ	ℓ ₁	L
		Nom.	O.D.		h	H					
SEPWC 3M - 2P	3	1/8	10.3	2.4	12	12	12.9	15.3	23.1	9.7	29.7
SEPWC 4M - 2P	4	1/8	10.3	2.4	12	12	13.7	16.1	24.1	9.7	30.7
SEPWC 6M - 2P	6	1/8	10.3	4.8	14	14	15.3	17.7	25.4	9.7	32.8
SEPWC 6M - 4P	6	1/4	13.7	4.8	14	14	15.3	17.7	30.2	14.2	37.6
SEPWC 8M - 2P	8	1/8	10.3	5.1	15	16	16.2	18.6	26.7	9.7	34.2
SEPWC 8M - 4P	8	1/4	13.7	6.4	15	16	16.2	18.6	31.2	14.2	38.7
SEPWC 8M - 8P	8	1/2	21.3	6.4	22	16	16.2	18.6	37.3	19.0	44.8
SEPWC10M - 4P	10	1/4	13.7	7.1	18	19	17.2	19.5	33.3	14.2	40.9
SEPWC10M - 6P	10	3/8	17.1	7.9	18	19	17.2	19.5	33.3	14.2	40.1
SEPWC10M - 8P	10	1/2	21.3	7.9	22	19	17.2	19.5	38.1	19.0	45.7
SEPWC12M - 4P	12	1/4	13.7	7.1	22	22	22.8	22.0	33.3	14.2	43.4
SEPWC12M - 6P	12	3/8	17.1	9.5	22	22	22.8	22.0	33.3	14.2	43.4
SEPWC12M - 8P	12	1/2	21.3	9.5	22	22	22.8	22.0	38.1	19.0	48.2
SEPWC14M - 6P	14	3/8	17.1	10.3	24	25	24.4	22.0	34.0	14.2	44.1
SEPWC15M - 8P	15	1/2	21.3	11.9	24	25	24.4	22.0	38.9	19.0	49.0
SEPWC16M - 8P	16	1/2	21.3	12.7	24	25	24.4	22.0	38.9	19.0	49.0
SEPWC18M - 8P	18	1/2	21.3	13.5	27	30	24.4	22.0	40.4	19.0	50.5

All dimensions are reference only, and are subject to change without prior notice. Sizes and types other than those featured above are available on request.



The profession for best quality and best re

Male Elbow CAME



Connects Fractional Tube To Female NPT Thread

Part No.	Tube O.D. D		T* (NPT)	d Min.	Width across flat				A	B	ℓ	L	L ₁
					h		H						
	in	mm			in	mm	in	mm					
SEME 1 - 1N	1/16	1.58	1/16	1.27	7/16	11.11	5/16	7.93	8.63	10.92	15.24	19.05	17.78
SEME 1 - 2N	1/16	1.58	1/8	1.27	7/16	11.11	5/16	7.93	8.63	10.92	15.24	19.05	17.78
SEME 2 - 2N	1/8	3.17	1/8	2.28	1/2	12.70	7/16	11.11	12.70	15.24	18.30	24.91	18.90
SEME 2 - 4N	1/8	3.17	1/4	2.28	1/2	12.70	7/16	11.11	12.70	15.24	18.30	24.91	23.36
SEME 3 - 2N	3/16	4.76	1/8	3.04	1/2	12.70	1/2	12.70	13.71	16.00	18.79	25.40	18.79
SEME 3 - 4N	3/16	4.76	1/4	3.04	1/2	12.70	1/2	12.70	13.71	16.00	18.79	25.40	23.36
SEME 4 - 1N	1/4	6.35	1/16	3.04	1/2	12.70	9/16	14.28	15.24	17.78	19.55	26.90	18.79
SEME 4 - 2N	1/4	6.35	1/8	4.82	1/2	12.70	9/16	14.28	15.24	17.78	19.10	26.47	19.10
SEME 4 - 4N	1/4	6.35	1/4	4.82	1/2	12.70	9/16	14.28	15.24	17.78	19.81	27.18	23.87
SEME 4 - 6N	1/4	6.35	3/8	4.82	11/16	17.46	9/16	14.28	15.24	17.78	22.35	29.71	28.40
SEME 4 - 8N	1/4	6.35	1/2	4.82	13/16	20.63	9/16	14.28	15.24	17.78	24.60	31.97	33.00
SEME 5 - 2N	5/16	7.93	1/8	4.82	9/16	14.28	5/8	15.87	16.25	18.54	21.33	28.70	19.81
SEME 5 - 4N	5/16	7.93	1/4	6.35	9/16	14.28	5/8	15.87	16.25	18.54	22.40	29.77	24.50
SEME 5 - 6N	5/16	7.93	3/8	6.35	11/16	17.46	5/8	15.87	16.25	18.54	23.11	30.48	28.40
SEME 6 - 2N	3/8	9.52	1/8	4.82	5/8	15.87	11/16	17.46	16.76	19.30	23.11	30.48	20.80
SEME 6 - 4N	3/8	9.52	1/4	7.11	5/8	15.87	11/16	17.46	16.76	19.30	23.11	30.48	25.40
SEME 6 - 6N	3/8	9.52	3/8	7.11	11/16	17.46	11/16	17.46	16.76	19.30	23.87	31.24	28.44
SEME 6 - 8N	3/8	9.52	1/2	7.11	13/16	20.63	11/16	17.46	16.76	19.30	23.80	31.42	33.02
SEME 6 - 12N	3/8	9.52	3/4	7.11	1-1/16	26.98	11/16	17.46	16.76	19.30	29.71	37.08	36.83
SEME 8 - 4N	1/2	12.70	1/4	7.11	13/16	20.63	7/8	22.22	22.86	21.84	25.90	36.06	28.30
SEME 8 - 6N	1/2	12.70	3/8	9.65	13/16	20.63	7/8	22.22	22.86	21.84	25.90	36.06	28.30
SEME 8 - 8N	1/2	12.70	1/2	10.41	13/16	20.63	7/8	22.22	22.86	21.84	25.90	36.06	33.02
SEME 8 - 12N	1/2	12.70	3/4	10.41	1-1/16	26.98	7/8	22.22	22.86	21.84	29.71	39.87	36.83
SEME10 - 6N	5/8	15.87	3/8	9.65	15/16	23.80	1	25.40	24.38	21.84	27.90	37.06	30.20
SEME10 - 8N	5/8	15.87	1/2	11.93	15/16	23.80	1	25.40	24.38	21.84	27.90	37.06	35.00
SEME10 - 12N	5/8	15.87	3/4	12.70	1-1/16	26.98	1	25.40	24.38	21.84	29.71	39.87	36.83
SEME12 - 8N	3/4	19.05	1/2	11.93	1-1/16	26.98	1-1/8	28.57	24.38	21.84	29.71	39.87	36.83
SEME12 - 12N	3/4	19.05	3/4	15.74	1-1/16	26.98	1-1/8	28.57	24.38	21.84	29.71	39.87	36.83
SEME14 - 12N	7/8	22.22	3/4	15.74	1-3/16	30.00	1-1/4	31.75	25.90	21.84	34.54	44.70	41.65
SEME16 - 12N	1	25.40	3/4	15.74	1-3/8	34.92	1-1/2	38.10	31.24	26.41	36.83	49.02	42.20
SEME16 - 16N	1	25.40	1	22.35	1-3/8	34.92	1-1/2	38.10	31.24	26.41	36.83	49.02	46.70

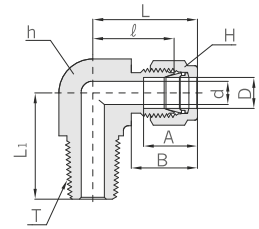
All dimensions are reference only, and are subject to change without prior notice. Sizes and types other than those featured above are available on request.



The profession for best quality and best re



Male Elbow CAME



Connects Metric Tube To Female ISO Tapered Thread

Part No.	Tube O.D. D	T* R(PT)	d Min.	Width across flat		A	B	ℓ	L	L ₁
				h	H					
SEME 3M - 2R	3	1/8	2.4	12.7	12	12.9	15.3	17.0	23.6	17.8
SEME 3M - 4R	3	1/4	2.4	12.7	12	12.9	15.3	18.0	24.6	23.4
SEME 4M - 2R	4	1/8	2.4	12.7	12	13.7	16.1	18.8	25.4	18.8
SEME 4M - 4R	4	1/4	2.4	12.7	12	13.7	16.1	18.8	25.4	23.4
SEME 6M - 2R	6	1/8	4.8	12.7	14	15.3	17.7	19.6	27.0	18.8
SEME 6M - 4R	6	1/4	4.8	12.7	14	15.3	17.7	19.6	27.0	23.4
SEME 6M - 6R	6	3/8	4.8	17.5	14	15.3	17.7	22.4	29.8	26.2
SEME 6M - 8R	6	1/2	4.8	20.6	14	15.3	17.7	24.4	31.8	33.0
SEME 8M - 2R	8	1/8	4.8	14.3	16	16.2	18.6	21.3	28.8	19.8
SEME 8M - 4R	8	1/4	6.4	14.3	16	16.2	18.6	21.3	28.8	24.4
SEME 8M - 6R	8	3/8	6.4	17.5	16	16.2	18.6	23.9	31.4	28.5
SEME 8M - 8R	8	1/2	6.4	20.6	16	16.2	18.6	25.1	32.6	33.0
SEME 10M - 2R	10	1/8	4.8	17.5	19	17.2	19.5	23.9	31.5	23.6
SEME 10M - 4R	10	1/4	7.1	17.5	19	17.2	19.5	23.9	31.5	26.2
SEME 10M - 6R	10	3/8	7.9	17.5	19	17.2	19.5	23.9	31.5	26.2
SEME 10M - 8R	10	1/2	7.9	20.6	19	17.2	19.5	25.9	33.5	33.0
SEME 12M - 2R	12	1/8	4.8	20.6	22	22.8	22.0	25.9	36.0	23.6
SEME 12M - 4R	12	1/4	7.1	20.6	22	22.8	22.0	25.9	36.0	26.2
SEME 12M - 6R	12	3/8	9.5	20.6	22	22.8	22.0	25.9	36.0	26.2
SEME 12M - 8R	12	1/2	9.5	20.6	22	22.8	22.0	25.9	36.0	33.0
SEME 12M -12R	12	3/4	9.5	27.0	22	22.8	22.0	29.7	39.8	36.8
SEME 16M - 6R	16	3/8	9.5	23.8	25	24.4	22.0	27.9	38.0	30.2
SEME 16M - 8R	16	1/2	11.9	23.8	25	24.4	22.0	27.9	38.0	35.1
SEME 16M -12R	16	3/4	12.7	27.0	25	24.4	22.0	29.7	39.8	36.8
SEME 18M - 8R	18	1/2	11.9	27.0	30	24.4	22.0	29.7	39.8	36.8
SEME 18M -12R	18	3/4	15.1	27.0	30	24.4	22.0	29.7	39.8	36.8
SEME 20M - 8R	20	1/2	11.9	34.9	32	26.0	22.0	34.5	44.6	41.7
SEME 20M -12R	20	3/4	15.9	30.0	32	26.0	22.0	34.5	44.6	41.7
SEME 22M -12R	22	3/4	15.9	30.0	32	26.0	22.0	34.5	44.6	41.7
SEME 22M -16R	22	1	18.3	34.9	32	26.0	22.0	34.5	44.6	46.5
SEME 25M -12R	25	3/4	15.9	34.9	38	31.3	26.5	36.8	49.1	41.7
SEME 25M -16R	25	1	21.8	34.9	38	31.3	26.5	36.8	49.1	46.5

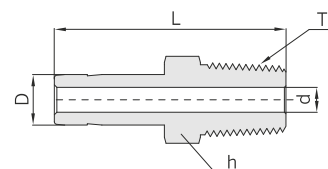
All dimensions are reference only, and are subject to change without prior notice. Sizes and types other than those featured above are available on request.



The profession for best quality and best re



Male Adapter CAME



Connects Fractional Port To Female NPT Thread

Part No.	Tube O.D. D		T* (NPT)	d (mm)	Width across flat h		L
	in	mm			in	mm	
SEMA 2 - 2N	1/8	3.17	1/8	2.03	7/16	11.11	29.50
SEMA 2 - 4N	1/8	3.17	1/4	2.03	9/16	14.28	34.80
SEMA 3 - 2N	3/16	4.76	1/8	3.04	7/16	11.11	30.22
SEMA 3 - 4N	3/16	4.76	1/4	3.04	9/16	14.28	35.56
SEMA 4 - 2N	1/4	6.35	1/8	4.32	7/16	11.11	31.80
SEMA 4 - 4N	1/4	6.35	1/4	4.32	9/16	14.28	37.08
SEMA 4 - 6N	1/4	6.35	3/8	4.32	11/16	17.46	37.84
SEMA 4 - 8N	1/4	6.35	1/2	4.32	7/8	22.22	43.43
SEMA 5 - 2N	5/16	7.93	1/8	4.57	7/16	11.11	32.76
SEMA 5 - 4N	5/16	7.93	1/4	5.59	9/16	14.28	38.10
SEMA 6 - 2N	3/8	9.52	1/8	4.83	7/16	11.11	33.50
SEMA 6 - 4N	3/8	9.52	1/4	6.86	9/16	14.28	38.90
SEMA 6 - 6N	3/8	9.52	3/8	6.86	11/16	17.46	39.60
SEMA 6 - 8N	3/8	9.52	1/2	6.86	7/8	22.22	45.20
SEMA 8 - 4N	1/2	12.70	1/4	7.11	9/16	14.28	44.50
SEMA 8 - 6N	1/2	12.70	3/8	9.40	11/16	17.46	45.20
SEMA 8 - 8N	1/2	12.70	1/2	9.40	7/8	22.22	50.50
SEMA10 - 6N	5/8	15.87	3/8	9.65	11/16	17.46	47.40
SEMA10 - 8N	5/8	15.87	1/2	11.94	7/8	22.22	52.30
SEMA10 - 12N	5/8	15.87	3/4	11.94	1-1/16	26.98	52.30
SEMA12 - 8N	3/4	19.05	1/2	11.94	7/8	22.22	52.30
SEMA12 - 12N	3/4	19.05	3/4	14.73	1-1/16	26.98	52.30
SEMA12 - 16N	3/4	19.05	1	14.73	1-3/8	34.92	57.91
SEMA14 - 12N	7/8	22.22	3/4	15.75	1-1/16	26.98	54.30
SEMA16 - 12N	1	25.40	3/4	15.75	1-1/16	26.98	58.70
SEMA16 - 16N	1	25.40	1	20.32	1-3/8	34.92	66.00

Connects Metric Port To Female ISO Taperad Thread

Part No.	Tube O.D. D	T* R(PT)	d Min.	Width across flat h	ℓ	L
SEMA 6M - 2R	6	1/8	4.1	12	15.75	32.8
SEMA 6M - 4R	6	1/4	4.1	14	15.75	38.1
SEMA 8M - 4R	8	1/4	5.6	14	16.50	39.1
SEMA10M - 4R	10	1/4	7.1	14	17.50	39.9
SEMA10M - 6R	10	3/8	7.1	18	17.50	40.6
SEMA10M - 8R	10	1/2	7.1	22	17.50	45.2
SEMA12M - 4R	12	1/4	7.1	14	23.50	46.5
SEMA12M - 6R	12	3/8	8.8	17	23.50	46.2
SEMA12M - 8R	12	1/2	8.8	22	23.50	51.8
SEMA18M - 8R	18	1/2	11.9	22	24.90	53.2
SEMA18M - 12R	18	3/4	13.9	27	24.90	53.2

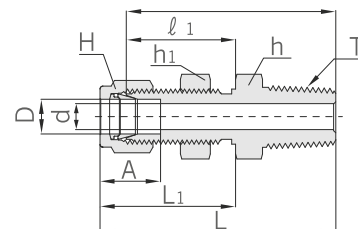
All dimensions are reference only, and are subject to change without prior notice. Sizes and types other than those featured above are available on request.



The profession for best quality and best re

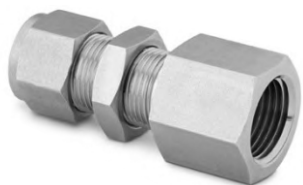


Bulkhead Male Connector SEBMC

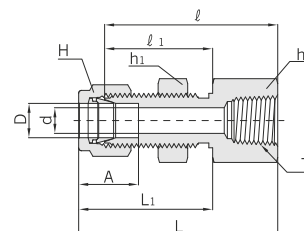


Connects Fractional Tube To Female NPT Thread

Part No.	Tube O.D. D		T* (NPT)	d Min.	Width across flat						A	ℓ	ℓ ₁	L	L ₁	Panel Hole Drill Size	Panel Max. Thickness
					h		h ₁		H								
	in	mm			in	mm	in	mm	in	mm							
SEBMC 2 - 2N	1/8	3.17	1/8	2.28	1/2	12.70	1/2	12.70	7/16	11.11	12.70	39.87	24.63	46.48	31.24	8.33	12.20
SEBMC 4 - 2N	1/4	6.35	1/8	4.82	5/8	15.87	5/8	15.87	9/16	14.28	15.24	42.16	26.16	49.53	33.52	11.50	10.16
SEBMC 4 - 4N	1/4	6.35	1/4	4.82	5/8	15.87	5/8	15.87	9/16	14.28	15.24	45.97	26.16	53.34	33.52	11.50	10.16
SEBMC 6 - 4N	3/8	9.52	1/4	7.11	3/4	19.05	3/4	19.05	11/16	17.46	16.76	50.03	29.46	57.40	36.83	14.68	11.17
SEBMC 6 - 6N	3/8	9.52	3/8	7.11	3/4	19.05	3/4	19.05	11/16	17.46	16.76	50.03	29.46	57.40	36.83	14.68	11.17
SEBMC 6 - 8N	3/8	9.52	1/2	7.11	7/8	22.22	3/4	19.05	11/16	17.46	16.76	56.38	29.46	63.75	36.83	14.68	11.17
SEBMC 8 - 6N	1/2	12.70	3/8	9.39	15/16	23.81	15/16	23.81	7/8	22.22	22.86	53.08	31.75	63.24	41.91	19.44	12.70
SEBMC 8 - 8N	1/2	12.70	1/2	10.41	15/16	23.81	15/16	23.81	7/8	22.22	22.86	58.67	31.75	68.83	41.91	19.44	12.70
SEBMC 12 - 12N	3/4	19.05	3/4	15.74	1-3/16	30.16	1-3/16	30.16	1-1/8	28.57	24.38	66.04	37.33	76.20	47.49	25.76	16.76
SEBMC 16 - 16N	1	25.40	1	22.35	1-5/8	41.27	1-5/8	41.27	1-1/2	38.10	31.24	81.02	45.21	93.21	57.40	33.73	19.05



Bulkhead Female Connector SEBFC



Connects Fractional Tube To Male NPT Thread

Part No.	Tube O.D. D		T* (NPT)	d Min.	Width across flat						A	ℓ	ℓ ₁	L	L ₁	Panel Hole Drill Size	Panel Max. Thickness
					h		h ₁		H								
	in	mm			in	mm	in	mm	in	mm							
SEBFC 2 - 2N	1/8	3.17	1/8	2.28	9/16	14.28	1/2	12.70	7/16	11.11	12.70	38.10	24.63	44.70	31.24	8.38	12.70
SEBFC 4 - 2N	1/4	6.35	1/8	4.82	5/8	15.87	5/8	15.87	9/16	14.28	15.24	39.62	26.16	46.99	33.52	11.50	10.16
SEBFC 4 - 4N	1/4	6.35	1/4	4.82	3/4	19.05	5/8	15.87	9/16	14.28	15.24	44.45	26.16	51.81	33.52	11.50	10.16
SEBFC 6 - 4N	3/8	9.52	1/4	7.11	3/4	19.05	3/4	19.05	11/16	17.46	16.76	47.75	29.46	55.11	36.83	14.68	11.17
SEBFC 8 - 6N	1/2	12.70	3/8	10.41	15/16	23.81	15/16	23.81	7/8	22.22	22.86	51.56	31.75	61.72	41.91	19.44	12.70
SEBFC 8 - 8N	1/2	12.70	1/2	10.41	1-1/16	26.98	15/16	23.81	7/8	22.22	22.86	56.38	31.75	66.54	41.91	19.44	12.70
SEBFC12 -12N	3/4	19.05	3/4	15.74	1-1/4	31.75	1-3/16	30.16	1-1/8	28.57	24.38	63.60	38.30	73.51	47.21	25.79	16.76

Connects Metric Tube To Male NPT Thread

Part No.	Tube O.D. D	T* (NPT)	d Min.	Width across flat			A	ℓ	ℓ ₁	L	L ₁	Panel Hole Drill Size	Panel Max. Thickness
				h	h ₁	H							
SEBFC 6M - 2N	6	1/8	4.8	16.0	15.8	14	15.3	39.6	26.2	46.90	35.00	11.5	10.2
SEBFC 6M - 4N	6	1/4	4.8	19.0	16.0	14	15.3	44.4	26.2	51.80	33.60	11.5	10.2
SEBFC 8M - 4N	8	1/4	6.3	19.0	17.4	16	16.2	46.7	28.6	53.85	35.55	13.1	11.2
SEBFC 12M - 8N	12	1/2	9.5	27.0	24.0	22	22.8	56.4	31.8	66.50	41.90	19.5	12.7

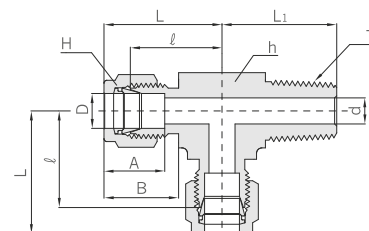
All dimensions are reference only, and are subject to change without prior notice. Sizes and types other than those featured above are available on request.



The profession for best quality and best re



Male Run Tee CAMRT



Connects Fractional Tube To Female NPT Thread

Part No.	Tube O.D. D		T* (NPT)	d Min.	Width across flat				A	B	ℓ	L	L ₁
	in	mm			h		H						
					in	mm	in	mm					
SEMRT 2 - 2N	1/8	3.17	1/8	2.28	1/2	12.70	7/16	11.11	12.70	15.24	17.00	24.91	17.80
SEMRT 2 - 4N	1/8	3.17	1/4	2.28	1/2	12.70	7/16	11.11	12.70	15.24	18.03	24.91	23.36
SEMRT 3 - 2N	3/16	4.76	1/8	3.04	1/2	12.70	1/2	12.70	13.71	16.00	17.78	24.38	17.78
SEMRT 4 - 2N	1/4	6.35	1/8	4.82	1/2	12.70	9/16	14.28	15.24	17.78	19.55	26.92	18.79
SEMRT 4 - 4N	1/4	6.35	1/4	4.82	1/2	12.70	9/16	14.28	15.24	17.78	19.71	27.38	23.87
SEMRT 5 - 2N	5/16	7.93	1/8	4.82	9/16	14.28	5/8	15.87	16.25	18.54	22.35	29.71	20.82
SEMRT 6 - 4N	3/8	9.52	1/4	7.11	5/8	15.87	11/16	17.46	16.75	19.30	23.11	30.48	25.40
SEMRT 6 - 6N	3/8	9.52	3/8	7.11	11/16	17.46	11/16	17.46	16.76	19.30	23.87	31.24	26.20
SEMRT 8 - 6N	1/2	12.70	3/8	9.65	13/16	20.63	7/8	22.22	22.86	21.84	25.90	36.06	28.19
SEMRT 8 - 8N	1/2	12.70	1/2	10.41	13/16	20.63	7/8	22.22	22.86	21.84	25.90	36.06	33.02
SEMRT10 - 8N	5/8	15.87	1/2	11.93	15/16	23.80	1	25.40	24.38	21.84	27.94	38.10	35.05
SEMRT12 - 12N	3/4	19.05	3/4	15.74	1-1/16	26.98	1-1/8	28.57	24.38	21.84	28.19	38.35	36.83

Connects Metric Tube To Female ISO Tapered Thread

Part No.	Tube O.D. D	T* R(PT)	d Min.	Width across flat		A	B	ℓ	L	L ₁
				h	H					
SEMRT 3M - 2R	3	1/8	2.4	12.7	12	12.9	15.3	17.0	23.6	17.8
SEMRT 3M - 4R	3	1/4	2.4	12.7	12	12.9	15.3	18.0	24.6	23.4
SEMRT 4M - 2R	4	1/8	2.4	12.7	12	13.7	16.1	18.8	25.4	18.8
SEMRT 6M - 2R	6	1/8	4.8	12.7	14	15.3	17.7	19.6	27.0	18.8
SEMRT 6M - 4R	6	1/4	4.8	14.2	14	15.3	17.7	19.6	27.0	23.4
SEMRT 8M - 2R	8	1/8	4.8	14.3	16	16.2	18.6	21.3	28.8	19.8
SEMRT 8M - 4R	8	1/4	6.4	14.3	16	16.2	18.6	21.3	28.8	24.4
SEMRT10M - 4R	10	1/4	7.1	17.5	19	17.2	19.5	23.9	31.5	28.2
SEMRT10M - 6R	10	3/8	7.9	17.5	19	17.2	19.5	23.9	31.5	28.2
SEMRT12M - 4R	12	1/4	7.1	20.6	22	22.8	22.0	25.9	36.0	28.2
SEMRT12M - 6R	12	3/8	9.5	20.6	22	22.8	22.0	25.9	36.0	28.2
SEMRT12M - 8R	12	1/2	9.5	20.6	22	22.8	22.0	25.9	36.0	33.0
SEMRT16M - 6R	16	3/8	9.5	23.8	25	24.4	22.0	27.9	38.0	30.2
SEMRT16M - 8R	16	1/2	11.9	23.8	25	24.4	22.0	27.9	38.0	35.1
SEMRT20M - 12R	20	3/4	15.9	30.0	32	26.0	22.0	34.5	44.6	41.7

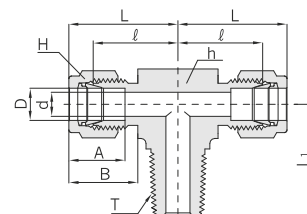
All dimensions are reference only, and are subject to change without prior notice. Sizes and types other than those featured above are available on request.



The profession for best quality and best re



Male Branch Tee CAMBT



Connects Fractional Tube To Female NPT Thread

Part No.	Tube O.D. D		T* (NPT)	d Min.	Width across flat				A	B	ℓ	L	L ₁
	in	mm			h		H						
					in	mm	in	mm					
SEMBT 2 - 2N	1/8	3.17	1/8	2.28	1/2	12.70	7/16	11.11	12.70	15.24	17.00	24.91	17.80
SEMBT 2 - 4N	1/8	3.17	1/4	2.28	1/2	12.70	7/16	11.11	12.70	15.24	18.30	24.91	23.36
SEMBT 3 - 2N	3/16	4.76	1/8	3.04	1/2	12.70	1/2	12.70	13.71	16.00	17.78	24.38	17.78
SEMBT 4 - 2N	1/4	6.35	1/8	4.82	1/2	12.70	9/16	14.28	15.24	17.78	19.55	26.92	18.79
SEMBT 4 - 4N	1/4	6.35	1/4	4.82	1/2	12.70	9/16	14.28	15.24	17.78	19.71	27.08	23.87
SEMBT 5 - 2N	5/16	7.93	1/8	4.82	9/16	14.28	5/8	15.87	16.25	18.54	22.35	29.71	20.82
SEMBT 6 - 4N	3/8	9.52	1/4	7.11	5/8	15.87	11/16	17.46	16.76	19.30	23.11	30.48	25.40
SEMBT 6 - 6N	3/8	9.52	3/8	7.11	11/16	17.46	11/16	17.46	16.76	19.30	23.87	31.24	26.20
SEMBT 8 - 6N	1/2	12.70	3/8	10.41	13/16	20.63	7/8	22.22	22.86	21.84	25.90	36.06	28.19
SEMBT 8 - 8N	1/2	12.70	1/2	10.41	13/16	20.63	7/8	22.22	22.86	21.84	25.90	36.06	33.02
SEMBT10 - 8N	5/8	15.87	1/2	11.93	15/16	23.80	1	25.40	24.38	21.84	27.94	38.10	35.05
SEMBT12 - 12N	3/4	19.05	3/4	15.74	1-1/16	26.98	1-1/8	28.57	24.38	21.84	28.19	38.35	36.83

Connects Metric Tube To Female ISO Tapered Thread

Part No.	Tube O.D. D	T* R(PT)	d Min.	Width across flat		A	B	ℓ	L	L ₁
				h	H					
SEMBT 3M - 2R	3	1/8	2.4	12.7	12	12.9	15.3	17.0	23.6	17.8
SEMBT 3M - 4R	3	1/4	2.4	12.7	12	12.9	15.3	18.0	24.6	23.4
SEMBT 4M - 2R	4	1/8	2.4	12.7	12	13.7	16.1	18.8	25.4	18.8
SEMBT 6M - 2R	6	1/8	4.8	12.7	14	15.3	17.7	19.6	27.0	18.8
SEMBT 6M - 4R	6	1/4	4.8	14.2	14	15.3	17.7	19.6	27.0	23.4
SEMBT 8M - 2R	8	1/8	4.8	14.3	16	16.2	18.6	21.3	28.8	19.8
SEMBT 8M - 4R	8	1/4	6.4	14.3	16	16.2	18.6	21.3	28.8	24.4
SEMBT10M - 4R	10	1/4	7.1	17.5	19	17.2	19.5	23.9	31.5	28.2
SEMBT10M - 6R	10	3/8	7.9	17.5	19	17.2	19.5	23.9	31.5	28.2
SEMBT12M - 4R	12	1/4	7.1	20.6	22	22.8	22.0	25.9	36.0	28.2
SEMBT12M - 6R	12	3/8	9.5	20.6	22	22.8	22.0	25.9	36.0	28.2
SEMBT12M - 8R	12	1/2	9.5	20.6	22	22.8	22.0	25.9	36.0	33.0
SEMBT16M - 6R	16	3/8	9.5	25.4	25	24.4	22.0	27.9	38.0	30.2
SEMBT16M - 8R	16	1/2	11.9	25.4	25	24.4	22.0	27.9	38.0	35.1
SEMBT20M - 12R	20	3/4	15.9	30.0	32	26.0	22.0	34.5	44.6	41.7

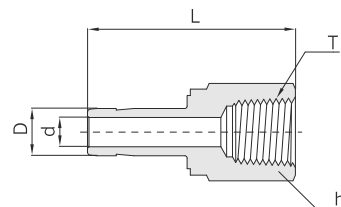
All dimensions are reference only, and are subject to change without prior notice. Sizes and types other than those featured above are available on request.



The profession for best quality and best re



Female Adapter CAFA



Connects Fractional Port To Male NPT Thread

Part No.	Tube O.D. D		T* (NPT)	d Min.	Width across flat h		L
	in	mm			in	mm	
SEFA 2 - 2N	1/8	3.17	1/8	2.03	9/16	14.28	31.50
SEFA 2 - 4N	1/8	3.17	1/4	2.03	3/4	19.05	35.30
SEFA 3 - 2N	3/16	4.76	1/8	3.04	9/16	14.28	32.00
SEFA 3 - 4N	3/16	4.76	1/4	3.04	3/4	19.05	35.81
SEFA 4 - 2N	1/4	6.35	1/8	4.32	9/16	14.28	33.02
SEFA 4 - 4N	1/4	6.35	1/4	4.32	3/4	19.05	37.10
SEFA 4 - 6N	1/4	6.35	3/8	4.32	7/8	22.22	39.37
SEFA 4 - 8N	1/4	6.35	1/2	4.32	1-1/16	26.98	45.50
SEFA 5 - 2N	5/16	7.93	1/8	5.59	9/16	14.28	34.29
SEFA 5 - 4N	5/16	7.93	1/4	5.59	3/4	19.05	37.59
SEFA 6 - 2N	3/8	9.52	1/8	6.86	9/16	14.28	34.29
SEFA 6 - 4N	3/8	9.52	1/4	6.86	3/4	19.05	38.10
SEFA 6 - 6N	3/8	9.52	3/8	6.86	7/8	22.22	40.38
SEFA 6 - 8N	3/8	9.52	1/2	6.86	1-1/16	26.98	46.73
SEFA 8 - 4N	1/2	12.70	1/4	9.40	3/4	19.05	43.43
SEFA 8 - 6N	1/2	12.70	3/8	9.40	7/8	22.22	45.46
SEFA 8 - 8N	1/2	12.70	1/2	9.40	1-1/16	26.98	51.80
SEFA10 - 6N	5/8	15.87	3/8	11.94	7/8	22.22	48.26
SEFA10 - 8N	5/8	15.87	1/2	11.94	1-1/16	26.98	53.84
SEFA10 - 12N	5/8	15.87	3/4	11.94	1-5/16	33.33	55.37
SEFA12 - 8N	3/4	19.05	1/2	14.73	1-1/16	26.98	52.83
SEFA12 - 12N	3/4	19.05	3/4	14.73	1-5/16	33.33	54.86
SEFA12 - 16N	3/4	19.05	1	14.73	1-5/8	41.27	58.42
SEFA14 - 12N	7/8	22.22	3/4	15.75	1-5/16	33.33	57.15
SEFA16 - 12N	1	25.40	3/4	20.32	1-5/16	33.33	60.70
SEFA16 - 16N	1	25.40	1	20.32	1-5/8	41.27	64.26

Connects Metric Port To Male ISO Tapered Thread

Part No.	Tube O.D. D	T* R(PT)	d Min.	Width across flat h	L
SEFA 3M - 2R	3	1/8	1.9	14	31.15
SEFA 6M - 2R	6	1/8	4.1	14	32.50
SEFA 6M - 4R	6	1/4	4.1	19	37.10
SEFA 8M - 4R	8	1/4	5.6	19	37.60
SEFA 10M - 4R	10	1/4	7.1	19	38.10
SEFA 10M - 6R	10	3/8	7.1	22	40.10
SEFA 10M - 8R	10	1/2	7.1	27	46.50
SEFA 12M - 4R	12	1/4	8.8	19	43.70
SEFA 12M - 6R	12	3/8	8.8	22	46.00
SEFA 12M - 8R	12	1/2	8.8	27	52.30
SEFA 18M - 12R	18	3/4	13.9	35	54.80

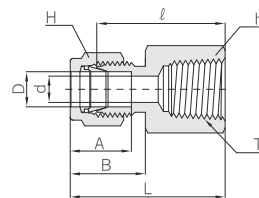
All dimensions are reference only, and are subject to change without prior notice. Sizes and types other than those featured above are available on request.



The profession for best quality and best re



Female Connector CAFC



Connects Fractional Tube To Male NPT Thread

Part No.	Tube O.D. D		T* (NPT)	d Min.	Width across flat				A	B	ℓ	L
	in	mm			h		H					
					in	mm	in	mm				
SEFC 1 - 1N	1/16	1.58	1/16	1.27	7/16	11.11	5/16	7.93	8.63	10.92	19.81	23.62
SEFC 1 - 2N	1/16	1.58	1/8	1.27	9/16	14.28	5/16	7.93	8.63	10.92	20.57	24.38
SEFC 2 - 2N	1/8	3.17	1/8	2.28	9/16	14.28	7/16	11.11	12.70	15.24	22.09	28.70
SEFC 2 - 4N	1/8	3.17	1/4	2.28	3/4	19.05	7/16	11.11	12.70	15.24	26.92	33.52
SEFC 3 - 2N	3/16	4.76	1/8	3.04	9/16	14.28	1/2	12.70	13.71	16.00	23.11	29.71
SEFC 4 - 2N	1/4	6.35	1/8	4.82	9/16	14.28	9/16	14.28	15.24	17.78	23.87	31.24
SEFC 4 - 4N	1/4	6.35	1/4	4.82	3/4	19.05	9/16	14.28	15.24	17.78	28.44	35.81
SEFC 4 - 6N	1/4	6.35	3/8	4.82	7/8	22.22	9/16	14.28	15.24	17.78	30.22	37.59
SEFC 4 - 8N	1/4	6.35	1/2	4.82	1-1/16	26.98	9/16	14.28	15.24	17.78	35.05	42.41
SEFC 5 - 2N	5/16	7.93	1/8	6.35	9/16	14.28	5/8	15.87	16.25	18.54	24.63	32.00
SEFC 5 - 4N	5/16	7.93	1/4	6.35	3/4	19.05	5/8	15.87	16.25	18.54	29.46	36.83
SEFC 6 - 2N	3/8	9.52	1/8	7.11	5/8	15.87	11/16	17.46	16.76	19.30	25.40	32.76
SEFC 6 - 4N	3/8	9.52	1/4	7.11	3/4	19.05	11/16	17.46	16.76	19.30	30.22	37.59
SEFC 6 - 6N	3/8	9.52	3/8	7.11	7/8	22.22	11/16	17.46	16.76	19.30	31.75	39.11
SEFC 6 - 8N	3/8	9.52	1/2	7.11	1-1/16	26.98	11/16	17.46	16.76	19.30	36.57	43.94
SEFC 6 - 12N	3/8	9.52	3/4	7.11	1-5/16	33.33	11/16	17.46	16.76	19.30	40.38	47.75
SEFC 8 - 4N	1/2	12.70	1/4	10.41	13/16	20.63	7/8	22.22	22.86	21.84	30.22	40.38
SEFC 8 - 6N	1/2	12.70	3/8	10.41	7/8	22.22	7/8	22.22	22.86	21.84	31.75	41.91
SEFC 8 - 8N	1/2	12.70	1/2	10.41	1-1/16	26.98	7/8	22.22	22.86	21.84	36.57	46.73
SEFC 8 - 12N	1/2	12.70	3/4	10.41	1-5/16	33.33	7/8	22.22	22.86	21.84	38.10	48.26
SEFC 10 - 6N	5/8	15.87	3/8	12.70	15/16	23.80	1	25.40	24.38	21.84	31.75	41.91
SEFC 10 - 8N	5/8	15.87	1/2	12.70	1-1/16	26.98	1	25.40	24.38	21.84	36.57	46.73
SEFC 10 - 12N	5/8	15.87	3/4	12.70	1-5/16	33.33	1	25.40	24.38	21.84	38.10	48.26
SEFC 12 - 8N	3/4	19.05	1/2	15.74	1-1/16	26.98	1-1/8	28.57	24.38	21.84	36.57	46.73
SEFC 12 - 12N	3/4	19.05	3/4	15.74	1-5/16	33.33	1-1/8	28.57	24.38	21.84	38.10	48.26
SEFC 14 - 12N	7/8	22.22	3/4	18.28	1-5/16	33.33	1-1/4	31.75	25.90	21.84	39.62	49.78
SEFC 16 - 12N	1	25.40	3/4	22.35	1-3/8	34.92	1-1/2	38.10	31.24	26.41	41.14	53.34
SEFC 16 - 16N	1	25.40	1	22.35	1-5/8	41.27	1-1/2	38.10	31.24	26.41	50.03	62.23

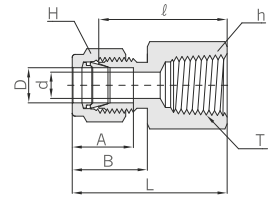
All dimensions are reference only, and are subject to change without prior notice. Sizes and types other than those featured above are available on request.



The profession for best quality and best re



Female Connector CAFC



Connects Metric Tube To Male ISO Tapered Thread

Part No.	Tube O.D. D	T* R(PT)	d Min.	Width across flat		A	B	l	L
				h	H				
SEFC 3M - 2R	3	1/8	2.4	14	12	12.9	15.3	22.1	28.7
SEFC 3M - 4R	3	1/4	2.4	19	12	12.9	15.3	26.9	33.5
SEFC 4M - 2R	4	1/8	2.4	14	12	13.7	16.1	23.1	29.7
SEFC 6M - 2R	6	1/8	4.8	14	14	15.3	17.7	23.9	31.3
SEFC 6M - 4R	6	1/4	4.8	19	14	15.3	17.7	28.4	35.8
SEFC 6M - 6R	6	3/8	4.8	22	14	15.3	17.7	29.5	36.9
SEFC 6M - 8R	6	1/2	4.8	27	14	15.3	17.7	35.1	42.5
SEFC 8M - 2R	8	1/8	6.4	15	16	16.2	18.6	24.6	32.1
SEFC 8M - 4R	8	1/4	6.4	19	16	16.2	18.6	29.5	37.0
SEFC 8M - 6R	8	3/8	6.4	22	16	16.2	18.6	30.2	37.7
SEFC 8M - 8R	8	1/2	6.4	27	16	16.2	18.6	35.8	43.3
SEFC 10M - 2R	10	1/8	7.9	18	19	17.2	19.5	25.4	33.0
SEFC 10M - 4R	10	1/4	7.9	19	19	17.2	19.5	30.2	37.8
SEFC 10M - 6R	10	3/8	7.9	22	19	17.2	19.5	31.0	38.6
SEFC 10M - 8R	10	1/2	7.9	27	19	17.2	19.5	36.6	44.2
SEFC 12M - 2R	12	1/8	9.5	22	22	22.8	22.0	28.4	38.5
SEFC 12M - 4R	12	1/4	9.5	22	22	22.8	22.0	30.2	40.3
SEFC 12M - 6R	12	3/8	9.5	22	22	22.8	22.0	31.0	41.1
SEFC 12M - 8R	12	1/2	9.5	27	22	22.8	22.0	36.6	46.7
SEFC 12M - 12R	12	3/4	9.5	35	22	22.8	22.0	38.9	49.0
SEFC 15M - 8R	15	1/2	11.9	27	25	24.4	22.0	36.6	46.7
SEFC 16M - 8R	16	1/2	12.7	27	25	24.4	22.0	36.8	46.9
SEFC 20M - 8R	20	1/2	15.9	30	32	26.0	22.0	37.8	47.9
SEFC 20M - 12R	20	3/4	15.9	35	32	26.0	22.0	39.6	49.7
SEFC 22M - 12R	22	3/4	18.3	35	32	26.0	22.0	39.6	49.7
SEFC 22M - 16R	22	1	18.3	41	32	26.0	22.0	47.8	57.9
SEFC 25M - 12R	25	3/4	21.8	35	38	31.3	26.5	41.1	53.4
SEFC 25M - 16R	25	1	21.8	41	38	31.3	26.5	50.0	62.3

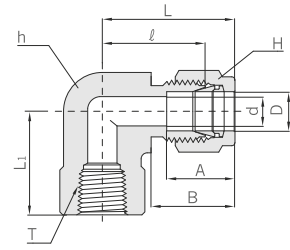
All dimensions are reference only, and are subject to change without prior notice. Sizes and types other than those featured above are available on request.



The profession for best quality and best re



Female Elbow CAFÉ



Connects Fractional Tube To Male NPT Thread

Part No.	Tube O.D. D		T* (NPT)	d Min.	Width across flat				A	B	ℓ	L	L ₁
	in	mm			h		H						
					in	mm	in	mm					
SEFE - 2N	1/8	3.17	1/8	2.28	1/2	12.70	7/16	11.11	12.70	15.24	18.03	24.63	19.05
SEFE - 4N	1/8	3.17	1/4	2.28	11/16	17.46	7/16	11.11	12.70	15.24	20.82	27.43	22.35
SEFE - 2N	3/16	4.76	1/8	3.04	1/2	12.70	1/2	12.70	13.71	16.00	18.79	25.40	19.05
SEFE - 2N	1/4	6.35	1/8	4.82	1/2	12.70	9/16	14.28	15.24	17.78	19.55	26.92	19.05
SEFE - 4N	1/4	6.35	1/4	4.82	11/16	17.46	9/16	14.28	15.24	17.78	22.35	29.71	22.35
SEFE - 6N	1/4	6.35	3/8	4.82	13/16	20.63	9/16	14.28	15.24	17.78	24.38	31.75	22.35
SEFE - 8N	1/4	6.35	1/2	4.82	1	25.40	9/16	14.28	15.24	17.78	27.17	34.54	28.44
SEFE - 2N	5/16	7.93	1/8	6.35	9/16	14.28	5/8	15.87	16.25	18.54	21.33	28.70	19.05
SEFE - 4N	5/16	7.93	1/4	6.35	11/16	17.46	5/8	15.87	16.25	18.54	23.11	30.48	22.35
SEFE - 2N	3/8	9.52	1/8	7.11	5/8	15.87	11/16	17.46	16.76	19.30	23.11	30.48	19.05
SEFE - 4N	3/8	9.52	1/4	7.11	11/16	17.46	11/16	17.46	16.76	19.30	23.87	31.24	22.35
SEFE - 6N	3/8	9.52	3/8	7.11	13/16	20.63	11/16	17.46	16.76	19.30	25.90	33.27	22.35
SEFE - 8N	3/8	9.52	1/2	7.11	1	25.40	11/16	17.46	16.76	19.30	28.70	36.06	28.44
SEFE - 4N	1/2	12.70	1/4	10.41	13/16	20.63	7/8	22.22	22.86	21.84	25.90	36.06	22.35
SEFE - 6N	1/2	12.70	3/8	10.41	13/16	20.63	7/8	22.22	22.86	21.84	25.90	36.06	22.35
SEFE - 8N	1/2	12.70	1/2	10.41	1	25.40	7/8	22.22	22.86	21.84	28.70	38.86	28.44
SEFE - 6N	5/8	15.87	3/8	12.70	15/16	23.80	1	25.40	24.38	21.84	27.94	38.10	22.35
SEFE - 8N	5/8	15.87	1/2	12.70	1	25.40	1	25.40	24.38	21.84	29.71	39.87	28.44
SEFE - 8N	3/4	19.05	1/2	15.74	1-1/16	26.98	1-1/8	28.57	24.38	21.84	29.71	39.87	28.44
SEFE - 12N	3/4	19.05	3/4	15.74	1-3/8	34.92	1-1/8	28.57	24.38	21.84	34.54	44.70	31.75
SEFE - 12N	7/8	22.22	3/4	18.28	1-3/8	34.92	1-1/4	31.75	25.90	21.84	34.54	44.70	31.75
SEFE - 12N	1	25.40	3/4	22.35	1-3/8	34.92	1-1/2	38.10	31.24	26.41	36.83	49.02	31.75
SEFE - 16N	1	25.40	1	22.35	1-11/16	42.86	1-1/2	38.10	31.24	26.41	38.10	50.29	38.10

Connects Metric Tube To Male NPT Thread

Part No.	Tube O.D. D	T* (NPT)	d Min.	Width across flat		A	B	ℓ	L	L ₁
				h	H					
SEFE 6M - 2N	6	1/8	4.8	12.7	14	15.3	17.7	19.6	27.0	19.00
SEFE 6M - 4N	6	1/4	4.8	17.5	14	15.3	17.7	22.4	29.8	22.40
SEFE 6M - 6N	6	3/8	4.8	20.6	14	15.3	17.7	24.4	31.7	22.40
SEFE 6M - 8N	6	1/2	4.8	25.4	14	15.3	17.7	27.2	34.6	28.40
SEFE 8M - 4N	8	1/4	6.4	17.5	16	16.2	18.6	23.1	30.6	22.40
SEFE 8M - 8N	8	1/2	6.4	20.6	16	16.2	18.6	28.0	35.2	28.40
SEFE 10M - 2N	10	1/8	7.9	17.5	19	17.2	19.5	23.9	31.5	19.00
SEFE 10M - 4N	10	1/4	7.9	17.5	19	17.2	19.5	25.9	33.5	22.40
SEFE 10M - 6N	10	3/8	7.9	20.6	19	17.2	19.5	25.9	33.5	22.40
SEFE 10M - 8N	10	1/2	7.9	25.4	19	17.2	19.5	28.7	36.1	28.40
SEFE 12M - 4N	12	1/4	9.5	20.6	22	22.8	22.0	25.9	36.0	22.40
SEFE 12M - 6N	12	3/8	9.5	20.6	22	22.8	22.0	25.9	36.0	22.40
SEFE 12M - 8N	12	1/2	9.5	25.4	22	22.8	22.0	28.7	38.8	28.40
SEFE 16M - 8N	16	1/2	12.7	27.0	25	24.4	22.0	29.7	39.5	28.40

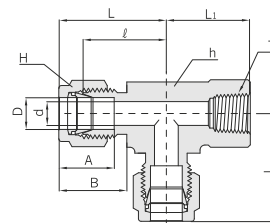
All dimensions are reference only, and are subject to change without prior notice. Sizes and types other than those featured above are available on request.



The profession for best quality and best re



Female Run Tee CAFRT



Connects Fractional Tube To Male NPT Thread

Part No.	Tube O.D. D		T* (NPT)	d Min.	Width across flat				A	B	ℓ	L	L ₁
					h		H						
	in	mm			in	mm	in	mm					
SEFRT- 2N	1/8	3.17	1/8	2.28	1/2	12.70	7/16	11.11	12.70	15.24	18.03	24.63	19.05
SEFRT- 2N	1/4	6.35	1/8	4.82	1/2	12.70	9/16	14.28	15.24	17.78	19.55	26.92	19.05
SEFRT- 4N	1/4	6.35	1/4	4.82	11/16	17.46	9/16	14.28	15.24	17.78	22.86	29.71	22.35
SEFRT- 4N	3/8	9.52	1/4	7.11	11/16	17.46	11/16	17.46	16.76	19.30	23.87	31.24	22.35
SEFRT- 6N	1/2	12.70	3/8	10.41	13/16	20.63	7/8	22.22	22.86	21.84	25.90	36.06	22.35
SEFRT- 8N	1/2	12.70	1/2	10.41	1	25.40	7/8	22.22	22.86	21.84	29.71	39.87	28.44
SEFRT-12N	3/4	19.05	3/4	15.74	1-3/8	34.92	1-1/8	28.57	24.38	21.84	34.54	44.70	31.75
SEFRT-12N	1	25.40	3/4	22.35	1-3/8	34.92	1-1/2	38.10	31.24	26.41	36.83	49.02	31.75
SEFRT-16N	1	25.40	1	22.35	1-11/16	42.86	1-1/2	38.10	31.24	26.41	41.40	53.59	38.10

Connects Metric Tube To Male NPT Thread

Part No.	Tube O.D. D	T* (NPT)	d Min.	Width across flat		A	B	ℓ	L	L ₁
				h	H					
SEFRT 6M - 2N	6	1/8	4.8	12.7	14	15.3	17.7	19.6	27.0	19.0
SEFRT 6M - 4N	6	1/4	4.8	17.5	14	15.3	17.7	22.4	29.8	22.4
SEFRT 6M - 8N	6	1/2	4.8	25.4	14	15.3	17.7	27.2	34.5	28.4
SEFRT 8M - 2N	8	1/8	6.4	15.8	16	16.2	18.6	22.4	29.9	19.0
SEFRT 8M - 4N	8	1/4	6.4	17.5	16	16.2	18.6	23.1	30.6	22.4
SEFRT 8M - 6N	8	3/8	6.4	20.6	16	16.2	18.6	25.2	32.4	22.4
SEFRT 8M - 8N	8	1/2	6.4	25.4	16	16.2	18.6	28.0	35.2	28.4
SEFRT 10M - 4N	10	1/4	7.9	20.6	19	17.2	19.5	25.9	33.5	22.4
SEFRT 12M - 4N	12	1/4	9.5	20.6	22	22.8	22.0	25.9	36.0	22.4
SEFRT 12M - 6N	12	3/8	9.5	20.6	22	22.8	22.0	25.9	36.0	22.4
SEFRT 12M - 8N	12	1/2	9.5	25.4	22	22.8	22.0	28.7	38.8	28.4
SEFRT 16M - 8N	16	1/2	12.7	25.4	25	24.4	22.0	29.7	39.5	28.4

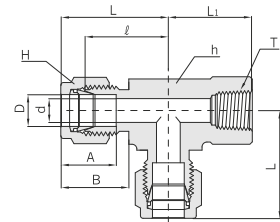
All dimensions are reference only, and are subject to change without prior notice. Sizes and types other than those featured above are available on request.



The profession for best quality and best re



Female Branch Tee CAFBT



Connects Fractional Tube To Male NPT Thread

Part No.	Tube O.D. D		T* (NPT)	d Min.	Width across flat				A	B	ℓ	L	L ₁
	in	mm			h		H						
					in	mm	in	mm					
SEFBT - 2N	1/8	3.17	1/8	2.28	1/2	12.70	7/16	11.11	12.70	15.24	18.03	24.38	19.05
SEFBT - 2N	1/4	6.35	1/8	4.82	1/2	12.70	9/16	14.28	15.24	17.78	19.55	26.92	19.05
SEFBT - 4N	1/4	6.35	1/4	4.82	11/16	17.46	9/16	14.28	15.24	17.78	22.35	29.71	22.35
SEFBT - 4N	3/8	9.52	1/4	7.11	11/16	17.46	11/16	17.46	16.76	19.30	23.87	31.24	22.35
SEFBT - 4N	1/2	12.70	1/4	10.41	13/16	20.63	7/8	22.22	22.86	21.84	25.90	36.06	22.35
SEFBT - 6N	1/2	12.70	3/8	10.41	13/16	20.63	7/8	22.22	22.86	21.84	25.90	36.06	22.35
SEFBT - 8N	1/2	12.70	1/2	10.41	1	25.40	7/8	22.22	22.86	21.84	28.70	38.86	28.44
SEFBT - 8N	5/8	15.87	1/2	12.70	1	25.40	1	25.40	24.38	21.84	28.70	38.86	28.44
SEFBT - 12N	3/4	19.05	3/4	15.74	1-3/8	34.92	1-1/8	28.57	24.38	21.84	34.54	44.70	31.75
SEFBT - 12N	1	25.40	3/4	22.35	1-3/8	34.92	1-1/2	38.10	31.24	26.41	36.83	49.02	31.75
SEFBT - 16N	1	25.40	1	22.35	1-11/16	42.86	1-1/2	38.10	31.24	26.41	44.20	53.59	38.10

Connects Metric Tube To Male NPT Thread

Part No.	Tube O.D. D	T* (NPT)	d Min.	Width across flat		A	B	ℓ	L	L ₁
				h	H					
SEFBT 6M - 2N	6	1/8	4.8	12.7	14	15.3	17.7	19.6	27.0	19.0
SEFBT 6M - 4N	6	1/4	4.8	17.5	14	15.3	17.7	22.4	29.8	22.4
SEFBT 6M - 6N	6	3/8	4.8	20.6	14	15.3	17.7	24.4	31.7	22.4
SEFBT 6M - 8N	6	1/2	4.8	25.4	14	15.3	17.7	27.2	34.5	28.4
SEFBT 8M - 2N	8	1/8	6.4	15.8	16	16.2	18.6	23.1	29.9	19.0
SEFBT 8M - 4N	8	1/4	6.4	17.5	16	16.2	18.6	23.1	30.6	22.4
SEFBT 8M - 6N	8	3/8	6.4	20.6	16	16.2	18.6	25.2	32.4	22.4
SEFBT 8M - 8N	8	1/2	6.4	25.4	16	16.2	18.6	28.0	35.2	28.4
SEFBT 10M - 4N	10	1/4	7.9	20.6	19	17.2	19.5	25.9	33.5	22.4
SEFBT 10M - 6N	10	3/8	7.9	20.6	19	17.2	19.5	25.9	33.3	22.4
SEFBT 10M - 8N	10	1/2	9.5	25.4	19	17.2	19.5	26.2	33.6	22.4
SEFBT 12M - 4N	12	1/4	9.5	20.6	22	22.8	22.0	25.9	36.0	22.4
SEFBT 12M - 6N	12	3/8	9.5	20.6	22	22.8	22.0	25.9	36.0	22.4
SEFBT 12M - 8N	12	1/2	9.5	25.4	22	22.8	22.0	28.7	38.8	28.4
SEFBT 16M - 8N	16	1/2	12.7	25.4	25	24.4	22.0	29.7	39.5	28.7

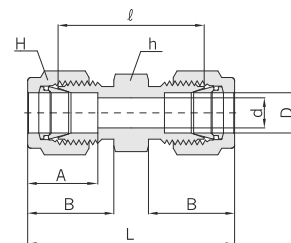
All dimensions are reference only, and are subject to change without prior notice. Sizes and types other than those featured above are available on request.



The profession for best quality and best re



Union CAU



Connects Fractional Tubes

Part No.	Tube O.D. D		d Min.	Width across flat				A	B	ℓ	L
				h		H					
	in	mm		in	mm	in	mm				
SEU - 1	1/16	1.58	1.27	5/16	7.93	5/16	7.93	8.63	10.92	17.50	25.15
SEU - 2	1/8	3.17	2.28	7/16	11.11	7/16	11.11	12.70	15.24	22.35	35.56
SEU - 3	3/16	4.76	3.04	7/16	11.11	1/2	12.70	13.71	16.00	24.13	37.33
SEU - 4	1/4	6.35	4.82	1/2	12.70	9/16	14.28	15.24	17.78	26.16	40.89
SEU - 5	5/16	7.93	6.35	9/16	14.28	5/8	15.87	16.25	18.54	28.19	42.92
SEU - 6	3/8	9.52	7.11	5/8	15.87	11/16	17.46	16.76	19.30	30.22	44.95
SEU - 8	1/2	12.70	10.41	13/16	20.63	7/8	22.22	22.86	21.84	30.98	51.30
SEU - 10	5/8	15.87	12.70	15/16	23.81	1	25.40	24.38	21.84	31.75	52.07
SEU - 12	3/4	19.05	15.74	1-1/16	26.98	1-1/8	28.57	24.38	21.84	33.27	53.59
SEU - 14	7/8	22.22	18.28	1-3/16	30.16	1-1/4	31.75	25.90	21.84	35.05	55.37
SEU - 16	1	25.40	22.35	1-3/8	34.92	1-1/2	38.10	31.24	26.41	40.38	64.77

Connects Metric Tubes

Part No.	Tube O.D. D	d Min.	Width across flat		A	B	ℓ	L
			h	H				
SEU - 2M	2	1.7	12	12	12.9	15.3	22.4	35.6
SEU - 3M	3	2.4	12	12	12.9	15.3	22.1	35.3
SEU - 4M	4	2.4	12	12	13.7	16.1	24.1	37.3
SEU - 6M	6	4.8	12	14	15.3	17.7	26.2	41.0
SEU - 8M	8	6.4	14	16	16.2	18.6	28.2	43.2
SEU - 10M	10	7.9	17.5	19	17.2	19.5	31.0	46.2
SEU - 12M	12	9.5	20.5	22	22.8	22.0	31.0	51.2
SEU - 15M	15	11.9	24	25	24.4	22.0	31.8	52.0
SEU - 16M	16	12.7	24	25	24.4	22.0	31.8	52.0
SEU - 18M	18	15.1	27	30	24.4	22.0	33.3	53.5
SEU - 20M	20	15.9	30	32	26.0	22.0	34.8	55.0
SEU - 22M	22	18.3	30	32	26.0	22.0	34.8	55.0
SEU - 25M	25	21.8	35	38	31.3	26.5	40.4	65.0

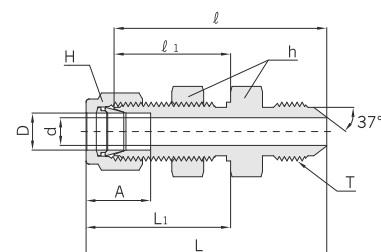
All dimensions are reference only, and are subject to change without prior notice. Sizes and types other than those featured above are available on request.



The profession for best quality and best re



Bulkhead Union CABU



Connects Fractional Tubes

Part No.	Tube O.D. D		d Min.	Width across flat				A	B	ℓ	ℓ ₁	L	L ₁	Panel Hole Drill Size	Panel Max. Thickness
				h , h ₁		H									
	in	mm		in	mm	in	mm								
SEBU - 1	1/16	1.58	1.27	5/16	7.93	5/16	7.93	8.63	10.92	23.87	13.46	31.50	17.27	5.16	3.05
SEBU - 2	1/8	3.17	2.28	1/2	12.70	7/16	11.11	12.70	15.24	38.10	24.63	51.30	31.24	8.33	12.70
SEBU - 3	3/16	4.76	3.04	9/16	14.28	1/2	12.70	13.71	16.00	40.38	25.40	53.59	32.00	9.92	12.70
SEBU - 4	1/4	6.35	4.82	5/8	15.87	9/16	14.28	15.24	17.78	42.92	26.16	57.65	33.52	11.50	10.16
SEBU - 5	5/16	7.93	6.35	11/16	17.46	5/8	15.87	16.25	18.54	45.97	28.44	60.70	35.81	13.09	11.17
SEBU - 6	3/8	9.52	7.11	3/4	19.05	11/16	17.46	16.76	19.30	47.49	29.46	62.23	36.83	14.68	11.17
SEBU - 8	1/2	12.70	10.41	15/16	23.81	7/8	22.22	22.86	21.84	50.80	31.75	71.12	41.91	19.44	12.70
SEBU -10	5/8	15.87	12.70	1-1/16	26.98	1	25.40	24.38	21.84	52.32	32.51	72.64	42.67	22.62	12.70
SEBU -12	3/4	19.05	15.74	1-3/16	30.16	1-1/8	28.57	24.38	21.84	58.67	37.33	78.99	47.49	25.79	16.76
SEBU -14	7/8	22.22	18.28	1-3/8	34.92	1-1/4	31.75	25.90	21.84	64.26	42.92	84.58	53.08	28.97	19.05
SEBU -16	1	25.40	22.35	1-5/8	41.27	1-1/2	38.10	31.24	26.41	71.37	45.21	95.75	57.40	33.73	19.05

Connects Metric Tubes

Part No.	Tube O.D. D	d Min.	Width across flat			A	B	ℓ	ℓ ₁	L	L ₁	Panel Hole Drill Size	Panel Max. Thickness
			h	h ₁ *	H								
SEBU - 3M	3	2.4	14.0	12.7	12	12.9	15.3	38.1	24.6	51.3	31.2	8.3	12.7
SEBU - 4M	4	2.4	14.0	14.3	12	13.7	16.1	40.4	25.4	53.6	32.0	9.9	12.7
SEBU - 6M	6	4.8	16.0	15.9	14	15.3	17.7	42.9	26.2	57.7	33.6	11.5	10.2
SEBU - 8M	8	6.4	18.0	17.5	16	16.2	18.6	46.0	28.6	61.0	36.1	13.1	11.2
SEBU -10M	10	7.9	22.0	22.0	19	17.2	19.5	48.5	29.4	63.7	37.0	16.2	11.2
SEBU -12M	12	9.5	24.0	23.8	22	22.8	22.0	50.8	31.8	71.0	41.9	19.5	12.7
SEBU -15M	15	11.9	27.0	27.0	25	24.4	22.0	52.3	32.5	72.5	42.6	22.8	12.7
SEBU -16M	16	12.7	27.0	27.0	25	24.4	22.0	52.3	32.5	72.5	42.6	22.8	12.7
SEBU -18M	18	15.1	30.0	30.0	30	24.4	22.0	58.7	37.3	78.9	47.4	26.0	16.8
SEBU -20M	20	15.9	35.0	35.0	32	26.0	22.0	64.3	42.9	84.5	53.0	29.0	17.0
SEBU -22M	22	18.3	35.0	35.0	32	26.0	22.0	64.3	42.9	84.5	53.0	29.0	19.1
SEBU -25M	25	21.8	41.3	41.3	38	31.3	26.5	71.4	45.2	95.9	57.5	33.7	19.1

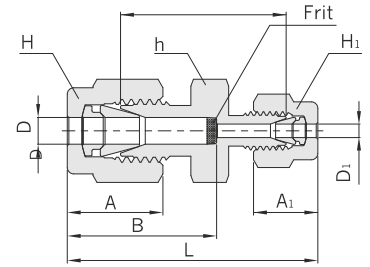
All dimensions are reference only, and are subject to change without prior notice. Sizes and types other than those featured above are available on request.



The profession for best quality and best re



Reducing Union CARU



Connects Fractional Tubes

Part No.	Tube O.D.				d Min.	Width across flat						A	A ₁	B	B ₁	ℓ	L
	D		D ₁			h		H		H ₁							
	in	mm	in	mm		in	mm	in	mm	in	mm						
SERU 2 - 1	1/8	3.17	1/16	1.58	1.27	7/16	11.11	7/16	11.11	5/16	7.93	12.70	8.63	15.24	10.92	20.60	30.91
SERU 3 - 1	3/16	4.76	1/16	1.58	1.27	7/16	11.11	1/2	12.70	5/16	7.93	13.71	8.63	16.00	10.92	21.84	32.25
SERU 3 - 2	3/16	4.76	1/8	3.17	2.28	7/16	11.11	1/2	12.70	7/16	11.11	13.71	12.70	16.00	15.24	23.36	36.57
SERU 4 - 1	1/4	6.35	1/16	1.58	1.27	1/2	12.70	9/16	14.28	5/16	7.93	15.24	8.63	17.78	10.92	23.11	34.29
SERU 4 - 2	1/4	6.35	1/8	3.17	2.28	1/2	12.70	9/16	14.28	7/16	11.11	15.24	12.70	17.78	15.24	24.63	38.60
SERU 4 - 3	1/4	6.35	3/16	4.76	3.04	1/2	12.70	9/16	14.28	1/2	12.70	15.24	13.71	17.78	16.00	25.40	39.37
SERU 5 - 2	5/16	7.93	1/8	3.17	2.28	9/16	14.28	5/8	15.87	7/16	11.11	16.25	12.70	18.54	15.24	25.90	39.87
SERU 5 - 4	5/16	7.93	1/4	6.35	4.82	9/16	14.28	5/8	15.87	9/16	14.28	16.25	15.24	18.54	17.78	27.43	42.16
SERU 6 - 1	3/8	9.52	1/16	1.58	1.27	5/8	15.87	11/16	17.46	5/16	7.93	16.76	8.63	19.30	10.92	25.40	36.57
SERU 6 - 2	3/8	9.52	1/8	3.17	2.28	5/8	15.87	11/16	17.46	7/16	11.11	16.76	12.70	19.30	15.24	26.92	40.89
SERU 6 - 4	3/8	9.52	1/4	6.35	4.82	5/8	15.87	11/16	17.46	9/16	14.28	16.76	15.24	19.30	17.78	28.44	43.18
SERU 6 - 5	3/8	9.52	5/16	7.93	6.35	5/8	15.87	11/16	17.46	5/8	15.87	16.76	16.25	19.30	18.54	29.46	44.19
SERU 8 - 2	1/2	12.70	1/8	3.17	2.28	13/16	20.63	7/8	22.22	7/16	11.11	22.86	12.70	21.84	15.24	28.44	45.21
SERU 8 - 4	1/2	12.70	1/4	6.35	4.82	13/16	20.63	7/8	22.22	9/16	14.28	22.86	15.24	21.84	17.78	29.46	46.99
SERU 8 - 6	1/2	12.70	3/8	9.52	7.11	13/16	20.63	7/8	22.22	11/16	17.46	22.86	16.76	21.84	19.30	30.98	48.51
SERU10 - 6	5/8	15.87	3/8	9.52	7.11	15/16	23.81	1	25.40	11/16	17.46	24.38	16.76	21.84	19.30	31.75	49.27
SERU10 - 8	5/8	15.87	1/2	12.70	10.41	15/16	23.81	1	25.40	7/8	22.22	24.38	22.86	21.84	21.84	31.75	52.07
SERU12 - 4	3/4	19.05	1/4	6.35	4.82	1-1/16	26.98	1-1/8	28.57	9/16	14.28	24.38	15.24	21.84	17.78	31.75	49.27
SERU12 - 6	3/4	19.05	3/8	9.52	7.11	1-1/16	26.98	1-1/8	28.57	11/16	17.46	24.38	16.76	21.84	19.30	33.27	50.80
SERU12 - 8	3/4	19.05	1/2	12.70	10.41	1-1/16	26.98	1-1/8	28.57	7/8	22.22	24.38	22.86	21.84	21.84	33.27	53.59
SERU12 -10	3/4	19.05	5/8	15.87	12.70	1-1/16	26.98	1-1/8	28.57	1	25.40	24.38	24.38	21.84	21.84	33.27	53.59
SERU16 - 8	1	25.40	1/2	12.70	10.41	1-3/8	34.92	1-1/2	38.10	7/8	22.22	31.24	22.86	26.41	21.84	40.89	63.24
SERU16 -12	1	25.40	3/4	19.05	15.74	1-3/8	34.92	1-1/2	38.10	1-1/8	28.57	31.24	24.38	26.41	21.84	40.38	62.73

Connects Metric Tubes

Part No.	Tube O.D.		d Min.	Width across flat			A	A ₁	B	B ₁	ℓ	L
	D	D ₁		h	H	H ₁						
SERU 3M - 2M	3	2	1.7	12	12	12	12.9	12.9	15.3	15.3	22.1	35.3
SERU 6M - 2M	6	2	1.7	14	14	12	15.3	12.9	17.7	15.3	24.6	38.6
SERU 6M - 3M	6	3	2.4	14	14	12	15.3	12.9	17.7	15.3	24.6	38.6
SERU 6M - 4M	6	4	2.4	14	14	12	15.3	13.7	17.7	16.1	25.4	39.4
SERU 8M - 6M	8	6	4.8	15	16	14	16.2	15.3	18.6	17.7	27.4	42.3
SERU10M - 6M	10	6	4.8	18	19	14	17.2	15.3	19.5	17.7	29.5	44.5
SERU10M - 8M	10	8	6.4	18	19	16	17.2	16.2	19.5	18.6	30.0	45.1
SERU12M - 6M	12	6	4.8	22	22	14	22.8	15.3	22.0	17.7	29.5	47.0
SERU12M - 8M	12	8	6.4	22	22	16	22.8	16.2	22.0	18.6	30.2	47.8
SERU12M -10M	12	10	7.9	22	22	19	22.8	17.2	22.0	19.5	31.0	48.7
SERU16M -10M	16	10	7.9	24	25	19	24.4	17.2	22.0	19.5	31.8	49.5
SERU16M -12M	16	12	9.5	24	25	22	24.4	22.8	22.0	22.0	31.8	52.0
SERU18M -12M	18	12	9.5	27	30	22	24.4	22.8	22.0	22.0	33.3	53.5
SERU25M -18M	25	18	15.1	35	38	30	31.3	24.4	26.5	22.0	38.6	61.0
SERU25M -20M	25	20	15.9	35	38	32	31.3	26.0	26.5	22.0	39.9	62.3

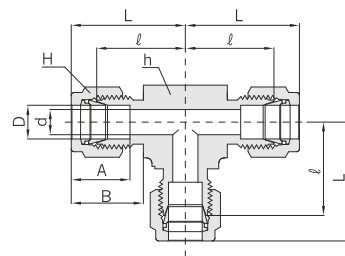
All dimensions are reference only, and are subject to change without prior notice. Sizes and types other than those featured above are available on request.



The profession for best quality and best re



Union Tee CAUT



Connects Fractional Tubes

Part No.	Tube O.D. D		d Min.	Width across flat				A	B	ℓ	L
	in	mm		h		H					
				in	mm	in	mm				
SEUT - 1	1/16	1.58	1.27	3/8	9.52	5/16	7.93	8.63	10.92	14.00	17.88
SEUT - 2	1/8	3.17	2.28	3/8	9.52	7/16	11.11	12.70	15.24	15.74	22.35
SEUT - 3	3/16	4.76	3.04	1/2	12.70	1/2	12.70	13.71	16.00	17.78	24.38
SEUT - 4	1/4	6.35	4.82	1/2	12.70	9/16	14.28	15.24	17.78	19.55	26.92
SEUT - 5	5/16	7.93	6.35	5/8	15.87	5/8	15.87	16.25	18.54	21.33	28.70
SEUT - 6	3/8	9.52	7.11	5/8	15.87	11/16	17.46	16.76	19.30	23.11	30.48
SEUT - 8	1/2	12.70	10.41	13/16	20.63	7/8	22.22	22.86	21.84	25.90	36.06
SEUT -10	5/8	15.87	12.70	15/16	23.80	1	25.40	24.38	21.84	28.70	38.80
SEUT -12	3/4	19.05	15.74	1-1/16	26.98	1-1/8	28.57	24.38	21.84	29.71	39.87
SEUT -14	7/8	22.22	18.28	1-3/16	30.00	1-1/4	31.75	25.90	21.84	34.54	44.70
SEUT -16	1	25.40	22.35	1-3/8	34.92	1-1/2	38.10	31.24	26.41	36.83	49.02

Connects Metric Tubes

Part No.	Tube O.D. D	d Min.	Width across flat		A	B	ℓ	L
			h	H				
SEUT - 2M	2	1.7	9.5	12	12.9	15.3	15.7	22.3
SEUT - 3M	3	2.4	9.5	12	12.9	15.3	15.7	22.3
SEUT - 4M	4	2.4	12.7	12	13.7	16.1	18.8	25.4
SEUT - 6M	6	4.8	12.7	14	15.3	17.7	19.6	27.0
SEUT - 8M	8	6.4	14.3	16	16.2	18.6	21.3	28.8
SEUT -10M	10	7.9	17.5	19	17.2	19.5	23.9	31.5
SEUT -12M	12	9.5	20.6	22	22.8	22.0	25.9	36.0
SEUT -15M	15	11.9	23.8	25	24.4	22.0	28.7	38.8
SEUT -16M	16	12.7	23.8	25	24.4	22.0	28.7	38.8
SEUT -18M	18	15.1	27.0	30	24.4	22.0	29.7	39.8
SEUT -20M	20	15.9	30.0	32	26.0	22.0	32.5	42.6
SEUT -22M	22	18.3	30.0	32	26.0	22.0	32.5	42.6
SEUT -25M	25	21.8	34.9	38	31.3	26.5	36.8	49.1

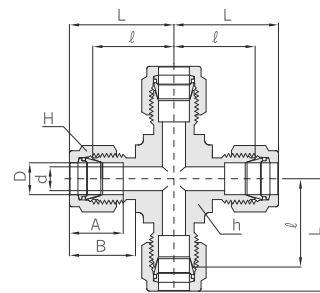
All dimensions are reference only, and are subject to change without prior notice. Sizes and types other than those featured above are available on request.



The profession for best quality and best re



Union Cross CAUC



Connects Fractional Tubes

Part No.	Tube O.D. D		d Min.	Width across flat				A	B	ℓ	L
	in	mm		h		H					
				in	mm	in	mm				
SEUC - 1	1/16	1.58	1.27	3/8	9.52	5/16	7.93	8.63	10.92	14.00	17.88
SEUC - 2	1/8	3.17	2.28	3/8	9.52	7/16	11.11	12.70	15.24	15.74	22.35
SEUC - 3	3/16	4.76	3.04	1/2	12.70	1/2	12.70	13.71	16.00	17.78	24.38
SEUC - 4	1/4	6.35	4.82	1/2	12.70	9/16	14.28	15.24	17.78	19.55	26.92
SEUC - 5	5/16	7.93	6.35	5/8	15.87	5/8	15.87	16.25	18.54	21.33	28.70
SEUC - 6	3/8	9.52	7.11	5/8	15.87	11/16	17.46	16.76	19.30	23.11	30.48
SEUC - 8	1/2	12.70	10.41	13/16	20.63	7/8	22.22	22.86	21.84	25.90	36.06
SEUC -10	5/8	15.87	12.70	13/16	20.63	1	25.40	24.38	21.84	28.70	38.80
SEUC -12	3/4	19.05	15.74	1-1/16	26.98	1-1/8	28.57	24.38	21.84	29.71	39.87
SEUC -14	7/8	22.22	18.28	1-3/16	30.00	1-1/4	31.75	25.90	21.84	34.54	44.70
SEUC -16	1	25.40	22.35	1-3/8	34.92	1-1/2	38.10	31.24	26.41	36.83	49.02

Connects Metric Tubes

Part No.	Tube O.D. D	d Min.	Width across flat		A	B	ℓ	L
			h	H				
SEUC - 3M	3	2.4	9.5	12	12.9	15.3	15.7	22.3
SEUC - 6M	6	4.8	12.7	14	15.3	17.7	19.6	27.0
SEUC - 8M	8	6.4	15.8	16	16.2	18.6	21.3	28.8
SEUC -10M	10	7.9	20.6	19	17.2	19.5	23.9	31.5
SEUC -12M	12	9.5	20.6	22	22.8	22.0	25.9	36.0
SEUC -16M	16	12.7	23.8	25	24.4	22.0	28.7	38.8
SEUC -18M	18	15.1	27.0	30	24.4	22.0	29.7	39.8
SEUC -20M	20	15.9	30.0	32	26.0	22.0	32.5	42.6
SEUC -25M	25	21.8	34.9	38	31.3	22.0	36.8	49.1

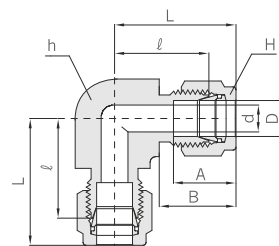
All dimensions are reference only, and are subject to change without prior notice. Sizes and types other than those featured above are available on request.



The profession for best quality and best re



Union Elbow CAUE



Connects Fractional Tubes

Part No.	Tube O.D. D		d Min.	Width across flat				A	B	ℓ	L
	in	mm		h		H					
				in	mm	in	mm				
SEUE - 1	1/16	1.58	1.27	3/8	9.52	5/16	7.93	8.63	10.92	14.00	17.88
SEUE - 2	1/8	3.17	2.28	3/8	9.52	7/16	11.11	12.70	15.24	15.74	22.35
SEUE - 3	3/16	4.76	3.04	1/2	12.70	1/2	12.70	13.71	16.00	17.78	24.38
SEUE - 4	1/4	6.35	4.82	1/2	12.70	9/16	14.28	15.24	17.78	19.55	26.92
SEUE - 5	5/16	7.93	6.35	9/16	14.28	5/8	15.87	16.25	18.54	21.33	28.70
SEUE - 6	3/8	9.52	7.11	5/8	15.87	11/16	17.46	16.76	19.30	23.11	30.48
SEUE - 8	1/2	12.70	10.41	13/16	20.63	7/8	22.22	22.86	21.84	25.90	36.06
SEUE -10	5/8	15.87	12.70	15/16	23.80	1	25.40	24.38	21.84	28.70	38.80
SEUE -12	3/4	19.05	15.74	1-1/16	26.98	1-1/8	28.57	24.38	21.84	29.71	39.87
SEUE -14	7/8	22.22	18.28	1-3/16	30.00	1-1/4	31.75	25.90	21.84	34.54	44.70
SEUE -16	1	25.40	22.35	1-3/8	34.92	1-1/2	38.10	31.24	26.41	36.83	49.02

Connects Metric Tubes

Part No.	Tube O.D. D	d Min.	Width across flat		A	B	ℓ	L
			h	H				
SEUE - 2M	2	1.7	9.5	12	12.9	15.3	15.7	22.3
SEUE - 3M	3	2.4	9.5	12	12.9	15.3	15.7	22.3
SEUE - 4M	4	2.4	12.7	12	13.7	16.4	18.8	25.4
SEUE - 6M	6	4.8	12.7	14	15.3	17.7	19.6	27.0
SEUE - 8M	8	6.4	14.3	16	16.2	18.6	21.3	28.8
SEUE -10M	10	7.9	17.5	19	17.2	19.5	23.9	31.5
SEUE -12M	12	9.5	20.6	22	22.8	22.0	25.9	36.0
SEUE -15M	15	11.9	23.8	25	24.4	22.0	28.7	38.8
SEUE -16M	16	12.7	23.8	25	24.4	22.0	28.7	38.8
SEUE -18M	18	15.1	27.0	30	24.4	22.0	29.7	39.8
SEUE -20M	20	15.9	30.0	32	26.0	22.0	32.5	42.6
SEUE -22M	22	18.3	30.0	32	26.0	22.0	32.5	42.6
SEUE -25M	25	21.8	34.9	38	31.3	26.5	36.8	49.1

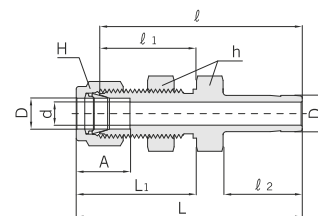
All dimensions are reference only, and are subject to change without prior notice. Sizes and types other than those featured above are available on request.



The profession for best quality and best re



Reducer CAR

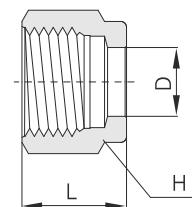


Connects Fractional Tube To Fractional Port

Part No.	Tube O.D. D		d Min.	Width across flat				A	ℓ	ℓ ₁	ℓ ₂	L	L ₁	Panel Hole Drill Size	Panel Max. Thickness
				h		H									
	in	mm		in	mm	in	mm								
SEBR 2 - 2	1/8	3.17	2.03	1/2	12.70	7/16	11.11	12.70	42.92	24.63	13.46	49.53	31.24	8.33	12.70
SEBR 4 - 4	1/4	6.35	4.32	5/8	15.87	9/16	14.28	15.24	48.51	26.16	15.74	55.88	33.52	11.50	10.16
SEBR 6 - 6	3/8	9.52	6.86	3/4	19.05	11/16	17.46	16.76	53.84	29.46	17.52	61.21	36.83	14.68	11.17
SEBR 8 - 8	1/2	12.70	9.40	15/16	23.81	7/8	22.22	22.6	62.73	31.75	23.11	72.89	41.91	19.44	12.70
SEBR10 - 10	5/8	15.87	11.94	1-1/16	26.98	1	25.40	24.38	65.02	32.51	24.70	75.18	42.67	22.62	12.70
SEBR16 - 16	1	25.40	20.32	1-5/8	41.27	1-1/2	38.10	31.24	88.13	45.21	31.70	100.33	57.40	33.73	19.05



Nut CAN



Fractional

Part No.	Tube O.D. D		Width across flat H		L
	in	mm	in	mm	
SEN - 1	1/16	1.58	5/16	7.94	7.90
SEN - 2	1/8	3.17	7/16	11.11	11.93
SEN - 3	3/16	4.76	1/2	12.70	11.93
SEN - 4	1/4	6.35	9/16	14.28	12.70
SEN - 5	5/16	7.93	5/8	15.87	13.46
SEN - 6	3/8	9.52	11/16	17.46	14.22
SEN - 8	1/2	12.70	7/8	22.22	17.52
SEN - 10	5/8	15.87	1	25.40	17.52
SEN - 12	3/4	19.05	1-1/8	28.57	17.52
SEN - 14	7/8	22.22	1-1/4	31.75	17.52
SEN - 16	1	25.40	1-1/2	38.10	20.57
SEN - 20	1-1/4	31.75	1-7/8	47.62	31.75
SEN - 24	1-1/2	38.10	2-1/4	57.15	38.10
SEN - 32	2	50.80	3	76.20	52.32

Metric

Part No.	Tube O.D. D	Width across flat H	L
SEN - 2M	2	12	11.9
SEN - 3M	3	12	11.9
SEN - 4M	4	12	11.9
SEN - 6M	6	14	12.7
SEN - 8M	8	16	13.5
SEN - 10M	10	19	15.1
SEN - 12M	12	22	17.4
SEN - 15M	15	25	17.4
SEN - 16M	16	25	17.4
SEN - 18M	18	30	17.4
SEN - 20M	20	32	17.4
SEN - 22M	22	32	17.4
SEN - 25M	25	38	20.6
SEN - 28M	28	46	30.6
SEN - 32M	32	50	34.4
SEN - 38M	38	60	40.6
SEN - 42M	42	65	44.7

8

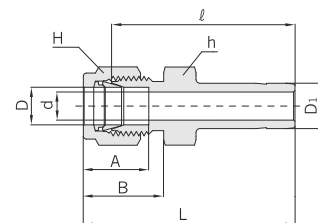
All dimensions are reference only, and are subject to change without prior notice. Sizes and types other than those featured above are available on request.



The profession for best quality and best re



Reducer CAR



Connects Fractional Tube To Fractional Port

Part No.	Tube O.D.				d Min.	Width across flat				A	B	ℓ	L
	D		D ₁			h		H					
	in	mm	in	mm		in	mm	in	mm				
SER 1 - 2	1/16	1.58	1/8	3.17	1.27	5/16	7.93	5/16	7.93	8.63	10.92	25.40	29.21
SER 1 - 4	1/16	1.58	1/4	6.35	1.27	5/16	7.93	5/16	7.93	8.63	10.92	27.68	31.49
SER 2 - 1	1/8	3.17	1/16	1.58	0.76	7/16	11.11	7/16	11.11	12.70	15.24	22.35	28.95
SER 2 - 2	1/8	3.17	1/8	3.17	2.03	7/16	11.11	7/16	11.11	12.70	15.24	26.92	33.52
SER 2 - 3	1/8	3.17	3/16	4.76	2.28	7/16	11.11	7/16	11.11	12.70	15.24	27.68	34.29
SER 2 - 4	1/8	3.17	1/4	6.35	2.28	7/16	11.11	7/16	11.11	12.70	15.24	29.46	36.06
SER 2 - 6	1/8	3.17	3/8	9.52	2.28	7/16	11.11	7/16	11.11	12.70	15.24	30.98	37.59
SER 2 - 8	1/8	3.17	1/2	12.70	2.28	9/16	14.28	7/16	11.11	12.70	15.24	37.59	44.19
SER 3 - 2	3/16	4.76	1/8	3.17	2.03	7/16	11.11	1/2	12.70	13.71	16.00	28.19	34.79
SER 3 - 4	3/16	4.76	1/4	6.35	3.04	7/16	11.11	1/2	12.70	13.71	16.00	30.48	37.08
SER 4 - 2	1/4	6.35	1/8	3.17	2.03	1/2	12.70	9/16	14.28	15.24	17.78	29.46	36.83
SER 4 - 3	1/4	6.35	3/16	4.76	3.04	1/2	12.70	9/16	14.28	15.24	17.78	30.22	37.59
SER 4 - 4	1/4	6.35	1/4	6.35	4.32	1/2	12.70	9/16	14.28	15.24	17.78	31.75	39.11
SER 4 - 5	1/4	6.35	5/16	7.93	4.82	1/2	12.70	9/16	14.28	15.24	17.78	32.51	39.87
SER 4 - 6	1/4	6.35	3/8	9.52	4.82	1/2	12.70	9/16	14.28	15.24	17.78	33.27	40.64
SER 4 - 8	1/4	6.65	1/2	12.70	4.82	9/16	14.28	9/16	14.28	15.24	17.78	38.86	46.22
SER 4 - 10	1/4	6.35	5/8	15.87	4.82	11/16	17.46	9/16	14.28	15.24	17.78	40.64	48.00
SER 4 - 12	1/4	6.35	3/4	19.05	4.82	13/16	20.63	9/16	14.28	15.24	17.78	40.38	47.75
SER 5 - 6	5/16	7.93	3/8	9.52	6.35	9/16	14.28	5/8	15.87	16.25	18.54	34.54	41.91
SER 5 - 8	5/16	7.93	1/2	12.70	6.35	9/16	14.28	5/8	15.87	16.25	18.54	40.13	47.49
SER 6 - 4	3/8	9.52	1/4	6.32	4.32	5/8	15.87	11/16	17.46	16.76	19.30	34.03	41.40
SER 6 - 6	3/8	9.52	3/8	6.86	6.86	5/8	15.87	11/16	17.46	16.76	19.30	35.81	43.18
SER 6 - 8	3/8	9.52	1/2	12.70	7.11	5/8	15.87	11/16	17.46	16.76	19.30	41.14	48.51
SER 6 - 10	3/8	9.52	5/8	15.87	7.11	11/16	17.46	11/16	17.46	16.76	19.30	42.92	50.29
SER 6 - 12	3/8	9.52	3/4	19.05	7.11	13/16	20.63	11/16	17.46	16.76	19.30	42.92	50.29
SER 8 - 4	1/2	12.70	1/4	6.35	4.32	13/16	20.63	7/8	22.22	22.86	21.84	34.79	44.95
SER 8 - 6	1/2	12.70	3/8	9.52	6.86	13/16	20.63	7/8	22.22	22.86	21.84	36.57	46.73
SER 8 - 8	1/2	12.70	1/2	12.70	9.40	13/16	20.63	7/8	22.22	22.86	21.84	42.16	52.32
SER 8 - 10	1/2	12.70	5/8	15.87	10.41	13/16	20.63	7/8	22.22	22.86	21.84	43.68	53.84
SER 8 - 12	1/2	12.70	3/4	19.05	10.41	13/16	20.63	7/8	22.22	22.86	21.84	43.68	53.84
SER 8 - 16	1/2	12.70	1	25.40	10.41	1-1/16	26.98	7/8	22.22	22.86	21.84	50.03	60.19
SER10 - 12	5/8	15.87	3/4	19.05	12.70	15/16	23.81	1	25.40	24.38	21.84	44.45	54.61
SER10 - 14	5/8	15.87	7/8	22.22	12.70	15/16	23.81	1	25.40	24.38	21.84	45.97	56.13
SER10 - 16	5/8	15.87	1	25.40	12.70	1-1/16	26.98	1	25.40	24.38	21.84	50.80	60.96
SER12 - 8	3/4	19.05	1/2	12.70	9.40	1-1/16	26.98	1-1/8	28.57	24.38	21.84	44.45	54.61
SER12 - 16	3/4	19.05	1	25.40	15.74	1-1/16	26.98	1-1/8	28.57	24.38	21.84	52.32	62.48
SER16 - 20	1	25.40	1-1/4	31.75	22.35	1-3/8	34.92	1-1/2	38.10	31.24	26.41	68.32	80.51
SER16 - 24	1	25.40	1-1/2	38.10	22.35	1-5/8	41.27	1-1/2	38.10	31.24	26.41	76.96	89.15
SER16 - 32	1	25.40	2	50.80	22.35	2-1/8	53.97	1-1/2	38.10	31.24	26.41	100.33	112.52

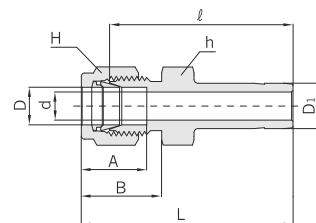
All dimensions are reference only, and are subject to change without prior notice. Sizes and types other than those featured above are available on request.



The profession for best quality and best re



Reducer CAR



Connects Metric Tube To Metric Port

Part No.	Tube O.D.		d Min.	Width across flat		A	B	ℓ	L
	D	D ₁		h	H				
SER 2M - 3M	2	3	1.7	12	12	12.9	15.3	26.9	33.5
SER 3M - 4M	3	4	2.2	12	12	12.9	15.3	28.4	35.0
SER 3M - 6M	3	6	2.4	12	12	12.9	15.3	29.5	36.1
SER 3M - 10M	3	10	2.4	12	12	12.9	15.3	31.8	38.4
SER 4M - 6M	4	6	2.4	12	12	13.7	16.1	30.5	37.1
SER 6M - 3M	6	3	1.9	14	14	15.3	17.7	29.5	36.9
SER 6M - 8M	6	8	4.8	14	14	15.3	17.7	32.5	39.9
SER 6M - 10M	6	10	4.8	14	14	15.3	17.7	33.3	40.7
SER 6M - 12M	6	12	4.8	14	14	15.3	17.7	38.9	46.3
SER 8M - 6M	8	6	4.1	15	16	16.2	18.6	32.8	40.3
SER 8M - 10M	8	10	6.4	15	16	16.2	18.6	34.5	42.0
SER 8M - 12M	8	12	6.4	15	16	16.2	18.6	40.1	47.6
SER 10M - 6M	10	6	4.1	18	19	17.2	19.5	34.8	42.4
SER 10M - 12M	10	12	7.9	18	19	17.2	19.5	42.2	49.8
SER 10M - 15M	10	15	7.9	18	19	17.2	19.5	43.7	51.3
SER 10M - 18M	10	18	7.9	19	19	17.2	19.5	43.7	51.3
SER 12M - 6M	12	6	4.1	22	22	22.8	22.0	34.8	44.9
SER 12M - 10M	12	10	7.1	22	22	22.8	22.0	36.6	46.7
SER 12M - 16M	12	16	9.5	22	22	22.8	22.0	43.7	53.8
SER 12M - 18M	12	18	9.5	22	22	22.8	22.0	43.7	53.8
SER 12M - 20M	12	20	9.5	22	22	22.8	22.0	46.0	56.1
SER 12M - 22M	12	22	9.5	24	22	22.8	22.0	46.0	56.1
SER 12M - 25M	12	25	9.5	27	22	22.8	22.0	52.3	62.4
SER 16M - 12M	16	12	8.8	24	25	24.4	22.0	42.9	53.0
SER 18M - 12M	18	12	8.8	27	30	24.4	22.0	44.5	54.6
SER 18M - 16M	18	16	12.0	27	30	24.4	22.0	46.0	56.1
SER 18M - 20M	18	20	15.1	27	30	24.4	22.0	47.5	57.6
SER 18M - 22M	18	22	15.1	27	30	24.4	22.0	47.5	57.6
SER 18M - 25M	18	25	15.1	27	30	24.4	22.0	52.3	62.4
SER 20M - 16M	20	16	12.0	30	32	26.0	22.0	47.8	57.9
SER 20M - 18M	20	18	13.9	30	32	26.0	22.0	47.8	57.9
SER 20M - 22M	20	22	15.8	30	32	26.0	22.0	49.3	59.4
SER 20M - 25M	20	25	15.8	30	32	26.0	22.0	54.1	64.2
SER 22M - 18M	22	18	13.9	30	32	26.0	22.0	47.8	57.9
SER 22M - 20M	22	20	15.1	30	32	26.0	22.0	49.3	59.4
SER 22M - 25M	22	25	18.3	30	32	26.0	22.0	54.1	64.2
SER 25M - 18M	25	18	13.9	35	38	31.3	26.5	50.8	63.1
SER 25M - 20M	25	20	15.5	35	38	31.3	26.5	52.3	64.6

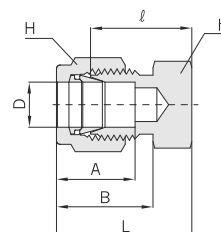
All dimensions are reference only, and are subject to change without prior notice. Sizes and types other than those featured above are available on request.



The profession for best quality and best re



Tube Cap CATC



Connects Fractional Tube End

Part No.	Tube O.D. D		Width across flat				A	B	ℓ	L
			h		H					
	in	mm	in	mm	in	mm				
SETC - 1	1/16	1.58	5/16	7.94	5/16	7.94	8.63	10.92	11.20	14.18
SETC - 2	1/8	3.17	7/16	11.11	7/16	11.11	12.70	15.24	13.46	20.06
SETC - 3	3/16	4.76	7/16	11.11	1/2	12.70	13.71	16.00	14.73	21.33
SETC - 4	1/4	6.35	1/2	12.70	9/16	14.28	15.24	17.78	16.00	23.26
SETC - 5	5/16	7.93	9/16	14.28	5/8	15.87	16.25	18.54	17.01	24.38
SETC - 6	3/8	9.52	5/8	15.87	11/16	17.46	16.76	19.30	18.28	25.65
SETC - 8	1/2	12.70	13/16	20.63	7/8	22.22	22.86	21.84	19.05	29.21
SETC - 10	5/8	15.87	15/16	23.81	1	25.40	24.38	21.84	19.81	29.97
SETC - 12	3/4	19.05	1-1/16	26.98	1-1/8	28.57	24.38	21.84	21.33	31.49
SETC - 14	7/8	22.22	1-3/16	30.16	1-1/4	31.75	25.90	21.84	23.87	34.03
SETC - 16	1	25.40	1-3/8	34.92	1-1/2	38.10	31.24	26.41	26.16	38.35

Connects Metric Tube End

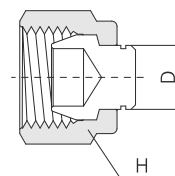
Part No.	Tube O.D. D	Width across flat		A	B	ℓ	L
		h	H				
SETC - 2M	2	12	12	12.9	15.3	13.5	20.1
SETC - 3M	3	12	12	12.9	15.3	13.5	20.1
SETC - 4M	4	12	12	13.7	16.1	14.7	21.3
SETC - 6M	6	14	14	15.3	17.7	15.7	23.1
SETC - 8M	8	15	16	16.2	18.6	17.0	24.5
SETC - 10M	10	18	19	17.2	19.5	19.0	26.6
SETC - 12M	12	22	22	22.8	22.0	19.0	29.1
SETC - 15M	15	24	25	24.4	22.0	19.8	29.9
SETC - 16M	16	24	25	24.4	22.0	19.8	29.9
SETC - 18M	18	27	30	24.4	22.0	21.3	31.4
SETC - 20M	20	30	32	26.0	22.0	23.9	34.0
SETC - 22M	22	30	32	26.0	22.0	23.9	34.0
SETC - 25M	25	35	38	31.3	26.5	26.2	38.5

All dimensions are reference only, and are subject to change without prior notice. Sizes and types other than those featured above are available on request.



The profession for best quality and best results.

Tube Plug CATP



Connects Fractional Port

Part No.	Tube O.D. D		Width across flat H	
	in	mm	in	mm
SETP - 1	1/16	1.58	5/16	7.94
SETP - 2	1/8	3.17	7/16	11.11
SETP - 3	3/16	4.76	1/2	12.70
SETP - 4	1/4	6.35	9/16	14.28
SETP - 5	5/16	7.93	5/8	15.87
SETP - 6	3/8	9.52	11/16	17.46
SETP - 8	1/2	12.70	7/8	22.22
SETP - 10	5/8	15.87	1	25.40
SETP - 12	3/4	19.05	1-1/8	28.57
SETP - 14	7/8	22.22	1-1/4	31.75
SETP - 16	1	25.40	1-1/2	38.10

Connects Metric Port

Part No.	Tube O.D. D	Width across flat H
SETP - 2M	2	12
SETP - 3M	3	12
SETP - 4M	4	12
SETP - 6M	6	14
SETP - 8M	8	16
SETP - 10M	10	19
SETP - 12M	12	22
SETP - 15M	15	25
SETP - 16M	16	25
SETP - 18M	18	30
SETP - 20M	20	32
SETP - 22M	22	32
SETP - 25M	25	38

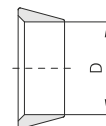
All dimensions are reference only, and are subject to change without prior notice. Sizes and types other than those featured above are available on request.



The profession for best quality and best results.



Front Ferrule CAFF



Fractional

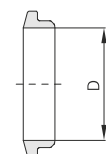
Part No.	Tube O.D. D	
	in	mm
SEFF - 1	1/16	1.58
SEFF - 2	1/8	3.17
SEFF - 3	3/16	4.76
SEFF - 4	1/4	6.35
SEFF - 5	5/16	7.93
SEFF - 6	3/8	9.52
SEFF - 8	1/2	12.70
SEFF - 10	5/8	15.87
SEFF - 12	3/4	19.05
SEFF - 14	7/8	22.22
SEFF - 16	1	25.40

Metric

Part No.	Tube O.D. D
SEFF - 2M	2
SEFF - 3M	3
SEFF - 4M	4
SEFF - 6M	6
SEFF - 8M	8
SEFF - 10M	10
SEFF - 12M	12
SEFF - 15M	15
SEFF - 16M	16
SEFF - 18M	18
SEFF - 20M	20
SEFF - 22M	22
SEFF - 25M	25



Back Ferrule SEFF



Fractional

Part No.	Tube O.D. D	
	in	mm
SEBF - 1	1/16	1.58
SEBF - 2	1/8	3.17
SEBF - 3	3/16	4.76
SEBF - 4	1/4	6.35
SEBF - 5	5/16	7.93
SEBF - 6	3/8	9.52
SEBF - 8	1/2	12.70
SEBF - 10	5/8	15.87
SEBF - 12	3/4	19.05
SEBF - 14	7/8	22.22
SEBF - 16	1	25.40

Metric

Part No.	Tube O.D. D
SEBF - 2M	2
SEBF - 3M	3
SEBF - 4M	4
SEBF - 6M	6
SEBF - 8M	8
SEBF - 10M	10
SEBF - 12M	12
SEBF - 15M	15
SEBF - 16M	16
SEBF - 18M	18
SEBF - 20M	20
SEBF - 22M	22
SEBF - 25M	25

All dimensions are reference only, and are subject to change without prior notice. Sizes and types other than those featured above are available on request.



The profession for best quality and best results.



CHARTERED ACCEL INDUSTRIES

AN ISO 9001:2015 CERTIFIED COMPANY



Unit No.01, Fatima Industries Estate, Rani Sati Marg,
Pathanwadi Malad East, Mumbai -400097, MH, INDIA



charteredaccel@gmail.com
info@charteredaccel.com



www.charteredaccel.com



Office:- +91 9699686236 ,9821535786



Handphone:- +91 9699686236 ,9821535786